

---

## Summary

<b>Production Name</b>	IL-31 Rabbit Polyclonal Antibody
<b>Description</b>	Rabbit Polyclonal Antibody
<b>Host</b>	Rabbit
<b>Application</b>	WB,IHC,ELISA
<b>Reactivity</b>	Human,Rat,Mouse

## Performance

<b>Conjugation</b>	Unconjugated
<b>Modification</b>	Unmodified
<b>Isotype</b>	IgG
<b>Clonality</b>	Polyclonal
<b>Form</b>	Liquid
<b>Storage</b>	Store at 4°C short term. Aliquot and store at -20°C long term. Avoid freeze/thaw cycles.
<b>Buffer</b>	Liquid in PBS containing 50% glycerol, 0.5% BSA and 0.02% New type preservative N.
<b>Purification</b>	Affinity purification

## Immunogen

<b>Gene Name</b>	IL31
<b>Alternative Names</b>	Interleukin-31 (IL-31)
<b>Gene ID</b>	386653.0
<b>SwissProt ID</b>	Q6EBC2.The antiserum was produced against synthesized peptide derived from the Internal region of human IL31. AA range:21-70

## Application

<b>Dilution Ratio</b>	WB 1:500-2000, IHC 1:50-200 ELISA 1:10000-20000.
<b>Molecular Weight</b>	65kD

## Background

---

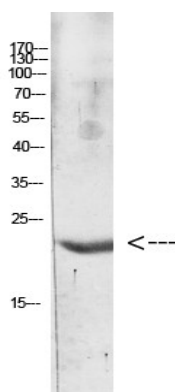
**Product Name: IL-31 Rabbit Polyclonal Antibody**  
**Catalog #: APRab12550**



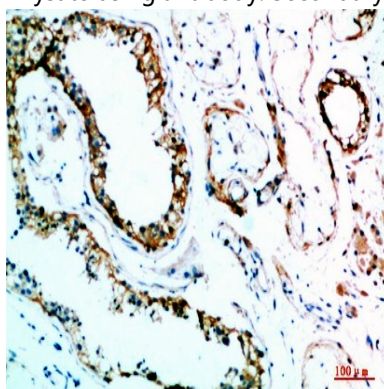
IL31, which is made principally by activated Th2-type T cells, interacts with a heterodimeric receptor consisting of IL31RA (MIM 609510) and OSMR (MIM 601743) that is constitutively expressed on epithelial cells and keratinocytes. IL31 may be involved in the promotion of allergic skin disorders and in regulating other allergic diseases, such as asthma (Dillon et al., 2004 [PubMed 15184896]).[supplied by OMIM, Mar 2008],function:Activates STAT3 and possibly STAT1 and STAT5 through the IL31 heterodimeric receptor composed of IL31RA and OSMR. IL31 may function in skin immunity.,induction:Up-regulated in skin homing T-cells of patients with atopic dermatitis (AD) and in activated circulating T-cells. Up-regulated in lesional biopsies of patients with allergic contact dermatitis (ACD).,tissue specificity:Detected at low levels in testis, bone marrow, skeletal muscle, kidney, colon, thymus, small intestine and trachea.,

## Research Area

## Image Data

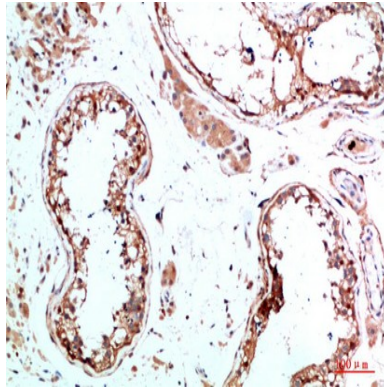


Western blot analysis of Hela Cell Lysate using antibody. Secondary antibody was diluted at 1:20000

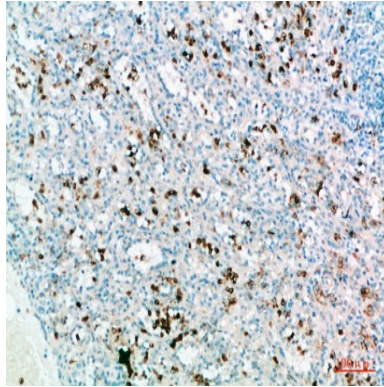


Immunohistochemical analysis of paraffin-embedded human-testis, antibody was diluted at 1:200

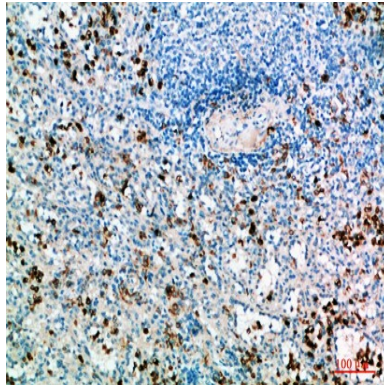
**Product Name: IL-31 Rabbit Polyclonal Antibody**  
**Catalog #: APRab12550**



Immunohistochemical analysis of paraffin-embedded human-testis, antibody was diluted at 1:200



Immunohistochemical analysis of paraffin-embedded human-spleen, antibody was diluted at 1:200



Immunohistochemical analysis of paraffin-embedded human-spleen, antibody was diluted at 1:200

## **Note**

For research use only.