
Summary

Production Name	IL-2Ry Rabbit Polyclonal Antibody
Description	Rabbit Polyclonal Antibody
Host	Rabbit
Application	WB,ELISA
Reactivity	Human,Rat,Mouse

Performance

Conjugation	Unconjugated
Modification	Unmodified
Isotype	IgG
Clonality	Polyclonal
Form	Liquid
Storage	Store at 4°C short term. Aliquot and store at -20°C long term. Avoid freeze/thaw cycles.
Buffer	Liquid in PBS containing 50% glycerol, 0.5% BSA and 0.02% New type preservative N.
Purification	Affinity purification

Immunogen

Gene Name	IL2RG IL2RG; Cytokine receptor common subunit gamma; Interleukin-2 receptor subunit gamma; IL-2 receptor subunit gamma; IL-2R subunit gamma; IL-2RG; gammaC; p64;
Alternative Names	CD132
Gene ID	3561.0
SwissProt ID	P31785.The antiserum was produced against synthesized peptide derived from the Internal region of human IL2RG. AA range:101-150

Application

Dilution Ratio	WB 1:500 - 1:2000. ELISA: 1:20000
Molecular Weight	40kD

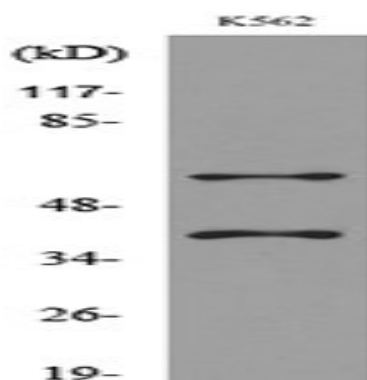
Background

The protein encoded by this gene is an important signaling component of many interleukin receptors, including those of interleukin -2, -4, -7 and -21, and is thus referred to as the common gamma chain. Mutations in this gene cause X-linked severe combined immunodeficiency (XSCID), as well as X-linked combined immunodeficiency (XCID), a less severe immunodeficiency disorder. [provided by RefSeq, Mar 2010],disease:Defects in IL2RG are the cause of X-linked combined immunodeficiency (XCID) [MIM:312863]. XCID is a less severe form of X-linked immunodeficiency with a less severe degree of deficiency in cellular and humoral immunity than that seen in XSCID.,disease:Defects in IL2RG are the cause of X-linked severe combined immunodeficiency (XSCID) [MIM:300400]; also known as agammaglobulinemia Swiss type. SCID refers to a genetically and clinically heterogeneous group of rare congenital disorders characterized by impairment of both humoral and cell-mediated immunity, leukopenia, and low or absent antibody levels. Patients with SCID present in infancy with recurrent, persistent infections by opportunistic organisms. The common characteristic of all types of SCID is absence of T-cell-mediated cellular immunity due to a defect in T-cell development.,domain:The box 1 motif is required for JAK interaction and/or activation.,domain:The WSXWS motif appears to be necessary for proper protein folding and thereby efficient intracellular transport and cell-surface receptor binding.,function:Common subunit for the receptors for a variety of interleukins.,online information:X-linked SCID mutation database,similarity:Belongs to the type I cytokine receptor family. Type 5 subfamily.,similarity:Contains 1 fibronectin type-III domain.,subunit:The gamma chain is common to the IL2, IL4, IL7, IL21 and probably also the IL13 receptors. Interacts with SHB upon interleukin stimulation. Interacts with HTLV-1 accessory protein p12I.,

Research Area

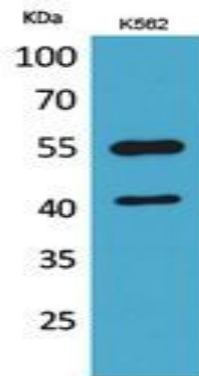
Cytokine-cytokine receptor interaction;Endocytosis;Jak_STAT;Primary immunodeficiency;

Image Data



Western blot analysis of lysate from K562 cells, using IL2RG Antibody.

Product Name: IL-2R γ Rabbit Polyclonal Antibody
Catalog #: APRab12549



Western Blot analysis of K562 cells using IL-2R γ Polyclonal Antibody.. Secondary antibody was diluted at 1:20000

Note

For research use only.