

## Summary

<b>Production Name</b>	IL-28R $\alpha$ Rabbit Polyclonal Antibody
<b>Description</b>	Rabbit Polyclonal Antibody
<b>Host</b>	Rabbit
<b>Application</b>	WB
<b>Reactivity</b>	Human,Rat,Mouse

## Performance

<b>Conjugation</b>	Unconjugated
<b>Modification</b>	Unmodified
<b>Isotype</b>	IgG
<b>Clonality</b>	Polyclonal
<b>Form</b>	Liquid
<b>Storage</b>	Store at 4°C short term. Aliquot and store at -20°C long term. Avoid freeze/thaw cycles.
<b>Buffer</b>	Liquid in PBS containing 50% glycerol, 0.5% BSA and 0.02% New type preservative N.
<b>Purification</b>	Affinity purification

## Immunogen

<b>Gene Name</b>	IL28RA IL28RA; IFNLR1; LICR2; Interleukin-28 receptor subunit alpha; IL-28 receptor subunit alpha; IL-28R-alpha; IL-28RA; Cytokine receptor class-II member 12; Cytokine receptor family 2 member 12;CRF2-12; Interferon lambda receptor 1; IFN-lambda receptor 1; IFN-lambda-R1; Likely interleukin or cytokine receptor 2; LICR2
<b>Alternative Names</b>	
<b>Gene ID</b>	163702.0
<b>SwissProt ID</b>	Q8IU57.Synthesized peptide derived from the Internal region of human IL-28R $\alpha$ .

## Application

<b>Dilution Ratio</b>	WB 1:500-1:2000. ELISA: 1:40000.
<b>Molecular Weight</b>	57kD

**Product Name: IL-28R $\alpha$  Rabbit Polyclonal Antibody**  
**Catalog #: APRab12545**



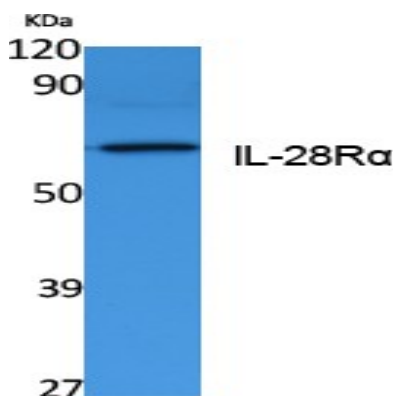
## Background

The protein encoded by this gene belongs to the class II cytokine receptor family. This protein forms a receptor complex with interleukin 10 receptor, beta (IL10RB). The receptor complex has been shown to interact with three closely related cytokines, including interleukin 28A (IL28A), interleukin 28B (IL28B), and interleukin 29 (IL29). The expression of all three cytokines can be induced by viral infection. The cells overexpressing this protein have been found to have enhanced responses to IL28A and IL29, but decreased response to IL28B. Three alternatively spliced transcript variants encoding distinct isoforms have been reported. [provided by RefSeq, Jul 2008],function:The IL28RA/IL10RB dimer is a receptor for IL28A, IL28B and IL29. The ligand/receptor complex seems to signal through the Jak-STAT pathway.,similarity:Belongs to the type II cytokine receptor family.,similarity:Contains 1 fibronectin type-III domain.,subunit:Heterodimer with IL10RB.,tissue specificity:Widely expressed.,

## Research Area

Cytokine-cytokine receptor interaction;Jak\_STAT;

## Image Data



Western Blot analysis of extracts from K562 cells, using IL-28R $\alpha$  Polyclonal Antibody.. Secondary antibody was diluted at 1:20000

## Note

For research use only.