

Summary

Production Name	IL-28 Rabbit Polyclonal Antibody
Description	Rabbit Polyclonal Antibody
Host	Rabbit
Application	WB,IHC,IF,ELISA
Reactivity	Human,Rat,Mouse

Performance

Conjugation	Unconjugated
Modification	Unmodified
Isotype	IgG
Clonality	Polyclonal
Form	Liquid
Storage	Store at 4°C short term. Aliquot and store at -20°C long term. Avoid freeze/thaw cycles.
Buffer	Liquid in PBS containing 50% glycerol, 0.5% BSA and 0.02% New type preservative N.
Purification	Affinity purification

Immunogen

Gene Name	IL28A
Alternative Names	IL28A; IFNL2; ZCYTO20; Interleukin-28A; IL-28A; Cytokine Zcyto20; Interferon lambda-2; IFN-lambda-2
Gene ID	282616.0
SwissProt ID	Q8IZJ0.The antiserum was produced against synthesized peptide derived from the C-terminal region of human IL28A. AA range:131-180

Application

Dilution Ratio	WB 1:500 - 1:2000. IHC-p: 1:100-1:300. ELISA: 1:20000.. IF 1:50-200
Molecular Weight	25kD

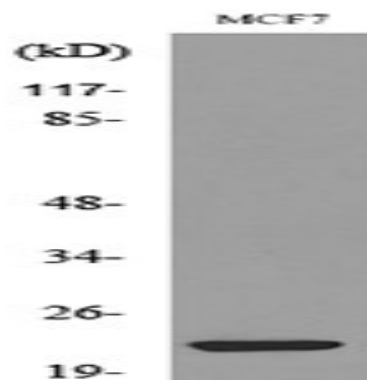
Background

This gene encodes a cytokine distantly related to type I interferons and the IL-10 family. This gene, interleukin 28B (IL28B), and interleukin 29 (IL29) are three closely related cytokine genes that form a cytokine gene cluster on a chromosomal region mapped to 19q13. Expression of the cytokines encoded by the three genes can be induced by viral infection. All three cytokines have been shown to interact with a heterodimeric class II cytokine receptor that consists of interleukin 10 receptor, beta (IL10RB) and interleukin 28 receptor, alpha (IL28RA). [provided by RefSeq, Jul 2008],caution:It is uncertain whether Met-1 or Met-5 is the initiator.,function:Cytokine with immunomodulatory activity. Up-regulates MHC class I antigen expression. Displays potent antiviral activity. Also displays antitumor activity. Ligand for the heterodimeric class II cytokine receptor composed of IL10RB and IL28RA. The ligand/receptor complex seems to signal through the Jak-STAT pathway.,induction:By viral infections or double stranded RNA.,online information:Interleukin-28 entry,similarity:Belongs to the IL-28/IL-29 family.,

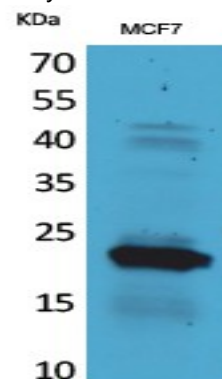
Research Area

Cytokine-cytokine receptor interaction;Jak_STAT;

Image Data

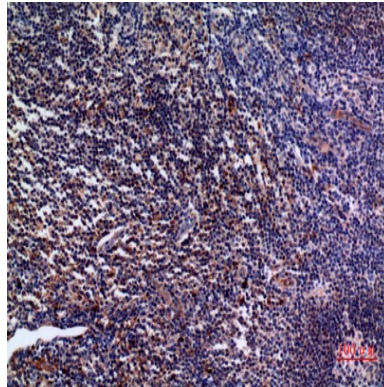


Western blot analysis of lysate from MCF7 cells, using IL28A Antibody.

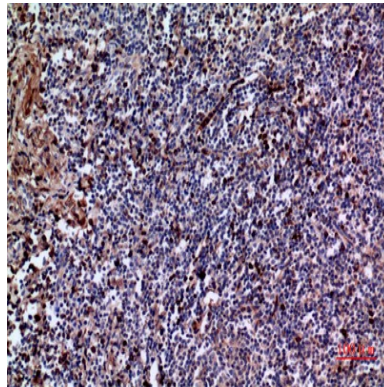


Western Blot analysis of MCF7 cells using IL-28 Polyclonal Antibody.. Secondary antibody was diluted at 1:20000

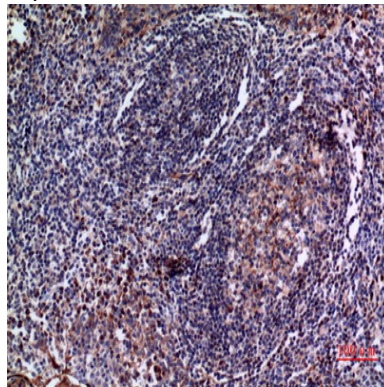
Product Name: IL-28 Rabbit Polyclonal Antibody
Catalog #: APRab12543



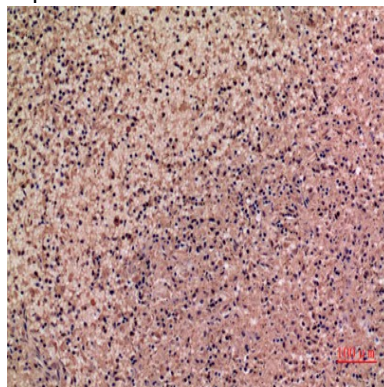
Immunohistochemical analysis of paraffin-embedded human-tonsil, antibody was diluted at 1:100



Immunohistochemical analysis of paraffin-embedded human-tonsil, antibody was diluted at 1:100



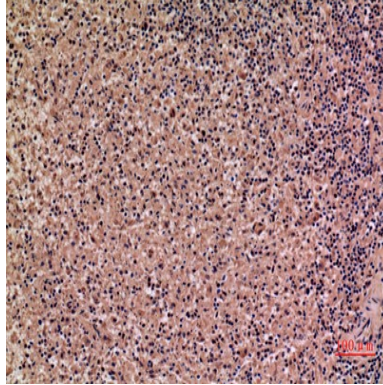
Immunohistochemical analysis of paraffin-embedded human-tonsil, antibody was diluted at 1:100



Product Name: IL-28 Rabbit Polyclonal Antibody
Catalog #: APRab12543



Immunohistochemical analysis of paraffin-embedded human-spleen, antibody was diluted at 1:100



Immunohistochemical analysis of paraffin-embedded human-spleen, antibody was diluted at 1:100

Note

For research use only.