

**Product Name: IL-21 Rabbit Polyclonal Antibody**  
**Catalog #: APRab12536**



## Summary

<b>Production Name</b>	IL-21 Rabbit Polyclonal Antibody
<b>Description</b>	Rabbit Polyclonal Antibody
<b>Host</b>	Rabbit
<b>Application</b>	WB
<b>Reactivity</b>	Human,Mouse

## Performance

<b>Conjugation</b>	Unconjugated
<b>Modification</b>	Unmodified
<b>Isotype</b>	IgG
<b>Clonality</b>	Polyclonal
<b>Form</b>	Liquid
<b>Storage</b>	Store at 4°C short term. Aliquot and store at -20°C long term. Avoid freeze/thaw cycles.
<b>Buffer</b>	Liquid in PBS containing 50% glycerol, 0.5% BSA and 0.02% New type preservative N.
<b>Purification</b>	Affinity purification

## Immunogen

<b>Gene Name</b>	IL21
<b>Alternative Names</b>	IL21; Interleukin-21; IL-21; Za11
<b>Gene ID</b>	59067.0
<b>SwissProt ID</b>	Q9HBE4.The antiserum was produced against synthesized peptide derived from human IL21. AA range:91-140

## Application

<b>Dilution Ratio</b>	WB 1:500-1:2000. ELISA: 1:20000.
<b>Molecular Weight</b>	18kD

## Background

This gene encodes a member of the common-gamma chain family of cytokines with immunoregulatory activity. The

**Product Name: IL-21 Rabbit Polyclonal Antibody**  
**Catalog #: APRab12536**

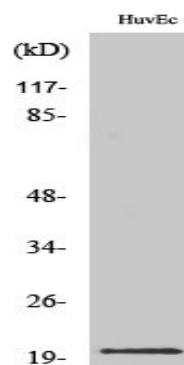


encoded protein plays a role in both the innate and adaptive immune responses by inducing the differentiation, proliferation and activity of multiple target cells including macrophages, natural killer cells, B cells and cytotoxic T cells. Dysregulation of this gene plays a role in multiple immune-mediated diseases including lupus, psoriasis and chronic inflammatory diseases. Alternatively spliced transcript variants encoding multiple isoforms have been observed for this gene. [provided by RefSeq, Dec 2011],function:Cytokine with immunoregulatory activity. May promote the transition between innate and adaptive immunity. Induces the production of IgG(1) and IgG(3) in B-cells (By similarity). May play a role in proliferation and maturation of natural killer (NK) cells in synergy with IL15. May regulate proliferation of mature B- and T-cells in response to activating stimuli. In synergy with IL15 and IL18 stimulates interferon gamma production in T-cells and NK cells. During T-cell mediated immune response may inhibit dendritic cells (DC) activation and maturation.,similarity:Belongs to the IL-15/IL-21 family.,tissue specificity:Expressed in activated CD4-positive T-cells but not in CD8-positive T-cells, B-cells, or monocytes.,

## Research Area

Cytokine-cytokine receptor interaction;Jak\_STAT;

## Image Data



Western Blot analysis of various cells using IL-21 Polyclonal Antibody diluted at 1 : 500

## Note

For research use only.