
Summary

Production Name	IL-20 Rabbit Polyclonal Antibody
Description	Rabbit Polyclonal Antibody
Host	Rabbit
Application	WB,ELISA
Reactivity	Human,Mouse

Performance

Conjugation	Unconjugated
Modification	Unmodified
Isotype	IgG
Clonality	Polyclonal
Form	Liquid
Storage	Store at 4°C short term. Aliquot and store at -20°C long term. Avoid freeze/thaw cycles.
Buffer	Liquid in PBS containing 50% glycerol, 0.5% BSA and 0.02% New type preservative N.
Purification	Affinity purification

Immunogen

Gene Name	IL20
Alternative Names	IL20; ZCYTO10; Interleukin-20; IL-20; Cytokine Zcyto10
Gene ID	50604.0
SwissProt ID	Q9NYY1.The antiserum was produced against synthesized peptide derived from human IL-20. AA range:12-61

Application

Dilution Ratio	WB 1:500 - 1:2000. ELISA: 1:5000.
Molecular Weight	28kD

Background

Product Name: IL-20 Rabbit Polyclonal Antibody
Catalog #: APRab12532

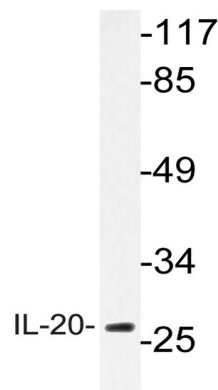


The protein encoded by this gene is a cytokine structurally related to interleukin 10 (IL10). This cytokine has been shown to transduce its signal through signal transducer and activator of transcription 3 (STAT3) in keratinocytes. A specific receptor for this cytokine is found to be expressed in skin and upregulated dramatically in psoriatic skin, suggesting a role for this protein in epidermal function and psoriasis. [provided by RefSeq, Jul 2008],function:Cytokine that may be involved in epidermal function and psoriasis. Acts through STAT3.,similarity:Belongs to the IL-10 family.,tissue specificity:Expressed at very low levels in skin, trachea, and other tissues.,

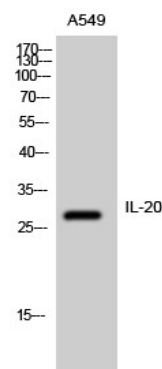
Research Area

Cytokine-cytokine receptor interaction;Jak_STAT;

Image Data



Western blot analysis of lysate from A549 cells, using IL-20 antibody.



Western Blot analysis of A549 cells using IL-20 Polyclonal Antibody

Note

For research use only.