
Summary

Production Name	IL-2 Rabbit Polyclonal Antibody
Description	Rabbit Polyclonal Antibody
Host	Rabbit
Application	WB,IHC,ELISA
Reactivity	Human,Mouse,Rat

Performance

Conjugation	Unconjugated
Modification	Unmodified
Isotype	IgG
Clonality	Polyclonal
Form	Liquid
Storage	Store at 4°C short term. Aliquot and store at -20°C long term. Avoid freeze/thaw cycles.
Buffer	Liquid in PBS containing 50% glycerol, 0.5% BSA and 0.02% New type preservative N.
Purification	Affinity purification

Immunogen

Gene Name	IL2
Alternative Names	IL2; Interleukin-2; IL-2; T-cell growth factor; TCGF; Aldesleukin
Gene ID	3558.0
SwissProt ID	P60568.The antiserum was produced against synthesized peptide derived from human IL-2. AA range:16-65

Application

Dilution Ratio	WB 1:500 - 1:2000. IHC: 1:100-300 ELISA: 1:20000.Not yet tested in other applications.
Molecular Weight	15kD

Background

Product Name: IL-2 Rabbit Polyclonal Antibody
Catalog #: APRab12531

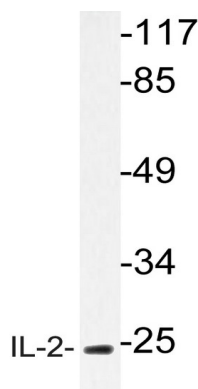


The protein encoded by this gene is a secreted cytokine that is important for the proliferation of T and B lymphocytes. The receptor of this cytokine is a heterotrimeric protein complex whose gamma chain is also shared by interleukin 4 (IL4) and interleukin 7 (IL7). The expression of this gene in mature thymocytes is monoallelic, which represents an unusual regulatory mode for controlling the precise expression of a single gene. The targeted disruption of a similar gene in mice leads to ulcerative colitis-like disease, which suggests an essential role of this gene in the immune response to antigenic stimuli. [provided by RefSeq, Jul 2008],disease:A chromosomal aberration involving IL2 is found in a form of T-cell acute lymphoblastic leukemia (T-ALL). Translocation t(4;16)(q26;p13) with involves TNFRSF17.,function:Produced by T-cells in response to antigenic or mitogenic stimulation, this protein is required for T-cell proliferation and other activities crucial to regulation of the immune response. Can stimulate B-cells, monocytes, lymphokine-activated killer cells, natural killer cells, and glioma cells.,online information:Interleukin-2 entry,online information:The Singapore human mutation and polymorphism database,pharmaceutical:Available under the name Proleukin (Chiron). Used in patients with renal cell carcinoma or metastatic melanoma.,similarity:Belongs to the IL-2 family.,

Research Area

Cytokine-cytokine receptor interaction;Jak_STAT;T_Cell_Receptor;Intestinal immune network for IgA production;Type I diabetes mellitus;Autoimmune thyroid disease;Allograft rejection;Graft-versus-host disease;

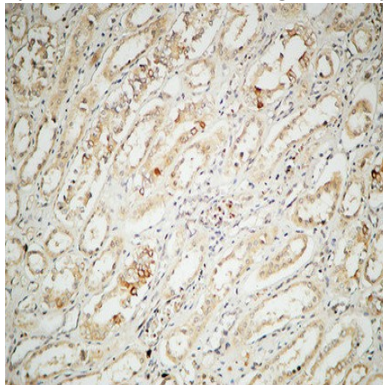
Image Data



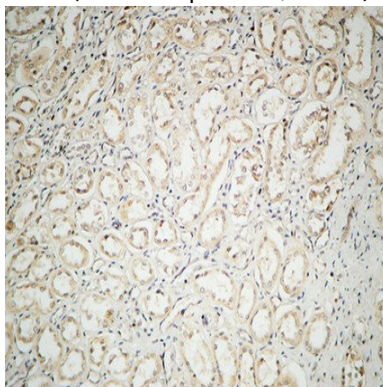
Western blot analysis of lysate from HT-29 cells, using IL-2 antibody.



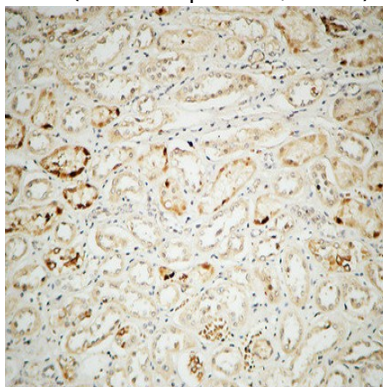
Western Blot analysis of various cells using IL-2 Polyclonal Antibody



Immunohistochemical analysis of paraffin-embedded Human kidney. 1, Antibody was diluted at 1:100 (4°,overnight) . 2, High-pressure and temperature EDTA, pH8.0 was used for antigen retrieval. 3,Secondary antibody was diluted at 1:200 (room temperature, 30min) .



Immunohistochemical analysis of paraffin-embedded Human kidney. 1, Antibody was diluted at 1:100 (4°,overnight) . 2, High-pressure and temperature EDTA, pH8.0 was used for antigen retrieval. 3,Secondary antibody was diluted at 1:200 (room temperature, 30min) .



Immunohistochemical analysis of paraffin-embedded Human kidney. 1, Antibody was diluted at 1:100 (4°,overnight) . 2, High-pressure and temperature EDTA, pH8.0 was used for antigen retrieval. 3,Secondary antibody was diluted at 1:200 (room temperature, 30min) .

Product Name: IL-2 Rabbit Polyclonal Antibody
Catalog #: APRab12531



Note

For research use only.