
Summary

Production Name	IL-1 β Rabbit Polyclonal Antibody
Description	Rabbit Polyclonal Antibody
Host	Rabbit
Application	WB,IHC,IF,ELISA
Reactivity	Human,Mouse,Rat

Performance

Conjugation	Unconjugated
Modification	Unmodified
Isotype	IgG
Clonality	Polyclonal
Form	Liquid
Storage	Store at 4°C short term. Aliquot and store at -20°C long term. Avoid freeze/thaw cycles.
Buffer	Liquid in PBS containing 50% glycerol, 0.5% BSA and 0.02% New type preservative N.
Purification	Affinity purification

Immunogen

Gene Name	IL1B
Alternative Names	IL1B; IL1F2; Interleukin-1 beta; IL-1 beta; Catabolin
Gene ID	3553.0
SwissProt ID	P01584.The antiserum was produced against synthesized peptide derived from the Internal region of human IL1B. AA range:181-230

Application

Dilution Ratio	WB 1:500 - 1:2000. IHC-p: 1:100-300 ELISA: 1:20000. IF 1:100-300 Not yet tested in other applications.
Molecular Weight	17kD

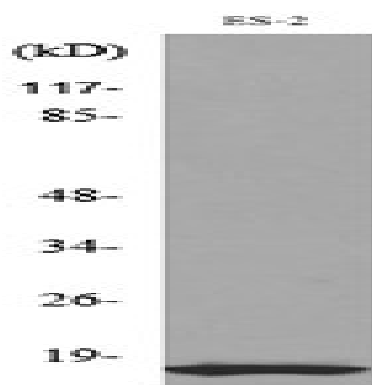
Background

The protein encoded by this gene is a member of the interleukin 1 cytokine family. This cytokine is produced by activated macrophages as a proprotein, which is proteolytically processed to its active form by caspase 1 (CASP1/ICE). This cytokine is an important mediator of the inflammatory response, and is involved in a variety of cellular activities, including cell proliferation, differentiation, and apoptosis. The induction of cyclooxygenase-2 (PTGS2/COX2) by this cytokine in the central nervous system (CNS) is found to contribute to inflammatory pain hypersensitivity. This gene and eight other interleukin 1 family genes form a cytokine gene cluster on chromosome 2. [provided by RefSeq, Jul 2008],domain:The similarity among the IL-1 precursors suggests that the amino ends of these proteins serve some as yet undefined function.,function:Produced by activated macrophages, IL-1 stimulates thymocyte proliferation by inducing IL-2 release, B-cell maturation and proliferation, and fibroblast growth factor activity. IL-1 proteins are involved in the inflammatory response, being identified as endogenous pyrogens, and are reported to stimulate the release of prostaglandin and collagenase from synovial cells.,online information:Interleukin-1 entry,online information:The Singapore human mutation and polymorphism database,similarity:Belongs to the IL-1 family.,subcellular location:The lack of a specific hydrophobic segment in the precursor sequence suggests that IL-1 is released by damaged cells or is secreted by a mechanism differing from that used for other secretory proteins.,subunit:Monomer.,

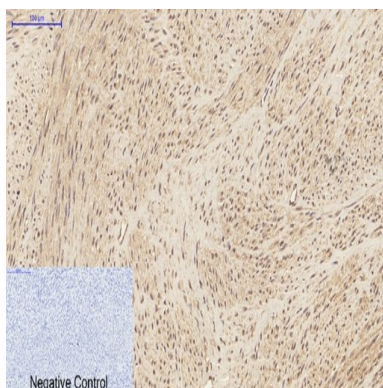
Research Area

MAPK_ERK_Growth;MAPK_G_Protein;Cytokine-cytokine receptor interaction;Apoptosis_Inhibition;Apoptosis_Mitochondrial;Apoptosis_Overview;Toll_Like;NOD-like receptor;Cytosolic DNA-sensing pathway;Hematopoietic cell lineage;Type I diabetes mellitus;Alzheimer's disease;Prion diseases;Graft-versus-host disease;

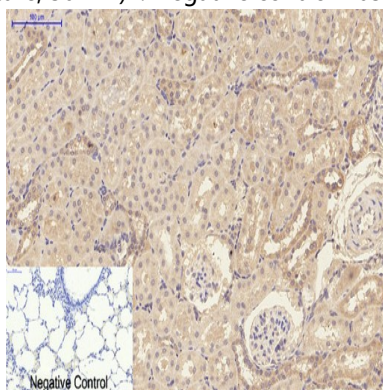
Image Data



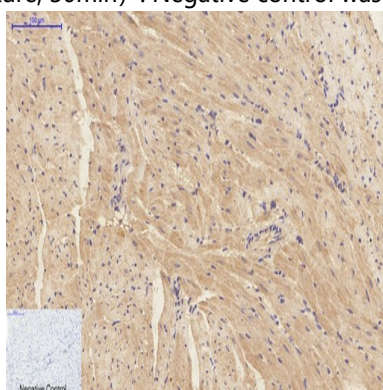
Western blot analysis of lysate from ES-2 cells, using IL1B Antibody.



Immunohistochemical analysis of paraffin-embedded Human-uterus tissue. 1,IL-1 β Polyclonal Antibody was diluted at 1:200 (4°C,overnight) . 2, Sodium citrate pH 6.0 was used for antibody retrieval (>98°C,20min) . 3,Secondary antibody was diluted at 1:200 (room teperature, 30min) . Negative control was used by secondary antibody only.

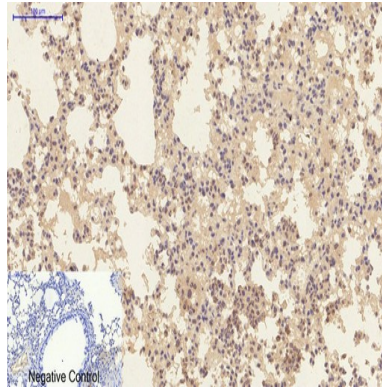


Immunohistochemical analysis of paraffin-embedded Rat-lung tissue. 1,IL-1 β Polyclonal Antibody was diluted at 1:200 (4°C,overnight) . 2, Sodium citrate pH 6.0 was used for antibody retrieval (>98°C,20min) . 3,Secondary antibody was diluted at 1:200 (room teperature, 30min) . Negative control was used by secondary antibody only.

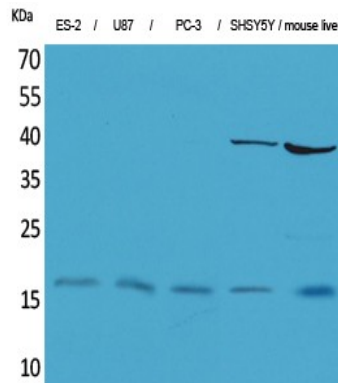


Immunohistochemical analysis of paraffin-embedded Mouse-heart tissue. 1,IL-1 β Polyclonal Antibody was diluted at 1:200 (4°C,overnight) . 2, Sodium citrate pH 6.0 was used for antibody retrieval (>98°C,20min) . 3,Secondary antibody was diluted at 1:200 (room teperature, 30min) . Negative control was used by secondary antibody only.

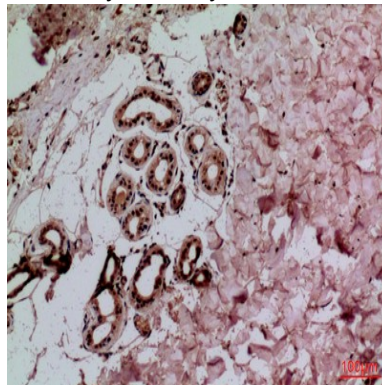
Product Name: IL-1 β Rabbit Polyclonal Antibody
Catalog #: APRab12530



Immunohistochemical analysis of paraffin-embedded Mouse-lung tissue. 1,IL-1 β Polyclonal Antibody was diluted at 1:200 (4°C,overnight) . 2, Sodium citrate pH 6.0 was used for antibody retrieval (>98°C,20min) . 3,Secondary antibody was diluted at 1:200 (room teperature, 30min) . Negative control was used by secondary antibody only.

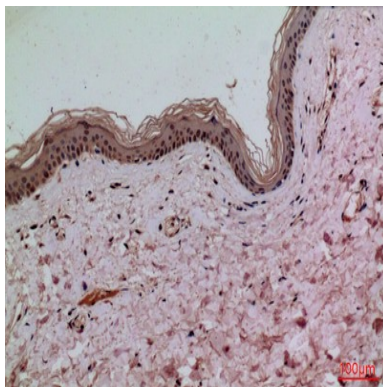


Western Blot analysis of ES-2, U87, PC-3, SHSY5Y, mouse liver cells using IL-1 β Polyclonal Antibody. Antibody was diluted at 1:2000. Secondary antibody was diluted at 1:20000

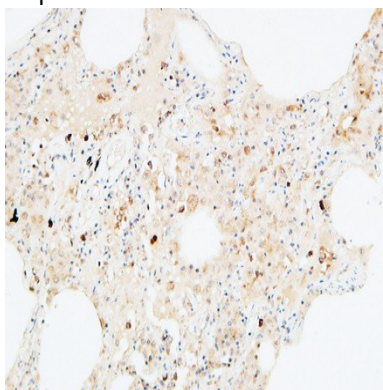


Immunohistochemical analysis of paraffin-embedded human-skin, antibody was diluted at 1:100

Product Name: IL-1 β Rabbit Polyclonal Antibody
Catalog #: APRab12530



Immunohistochemical analysis of paraffin-embedded human-skin, antibody was diluted at 1:100



Immunohistochemical analysis of paraffin-embedded Human lung. 1, Antibody was diluted at 1:200 (4 $^{\circ}$,overnight) . 2, High-pressure and temperature EDTA, pH8.0 was used for antigen retrieval. 3,Secondary antibody was diluted at 1:200 (room temperature, 30min) .

Note

For research use only.