

## Summary

<b>Production Name</b>	IL-1RII Rabbit Polyclonal Antibody
<b>Description</b>	Rabbit Polyclonal Antibody
<b>Host</b>	Rabbit
<b>Application</b>	WB,IHC,ELISA
<b>Reactivity</b>	Human,Rat,Mouse

## Performance

<b>Conjugation</b>	Unconjugated
<b>Modification</b>	Unmodified
<b>Isotype</b>	IgG
<b>Clonality</b>	Polyclonal
<b>Form</b>	Liquid
<b>Storage</b>	Store at 4°C short term. Aliquot and store at -20°C long term. Avoid freeze/thaw cycles.
<b>Buffer</b>	Liquid in PBS containing 50% glycerol, 0.5% BSA and 0.02% New type preservative N.
<b>Purification</b>	Affinity purification

## Immunogen

<b>Gene Name</b>	IL1R2
<b>Alternative Names</b>	IL1R2; IL1RB; Interleukin-1 receptor type 2; IL-1R-2; IL-1RT-2; IL-1RT2; CD121 antigen-like family member B; CDw121b; IL-1 type II receptor; Interleukin-1 receptor beta; IL-1R-beta; Interleukin-1 receptor type II; CD121b
<b>Gene ID</b>	7850.0
<b>SwissProt ID</b>	P27930.The antiserum was produced against synthesized peptide derived from the Internal region of human IL1R2. AA range:141-190

## Application

<b>Dilution Ratio</b>	WB 1:500 - 1:2000. IHC: 1:100-1:300. ELISA: 1:20000..
<b>Molecular Weight</b>	43kD

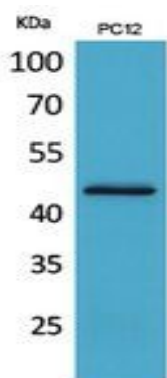
## Background

The protein encoded by this gene is a cytokine receptor that belongs to the interleukin 1 receptor family. This protein binds interleukin alpha (IL1A), interleukin beta (IL1B), and interleukin 1 receptor, type I(IL1R1/IL1RA), and acts as a decoy receptor that inhibits the activity of its ligands. Interleukin 4 (IL4) is reported to antagonize the activity of interleukin 1 by inducing the expression and release of this cytokine. This gene and three other genes form a cytokine receptor gene cluster on chromosome 2q12. Alternative splicing results in multiple transcript variants and protein isoforms. Alternative splicing produces both membrane-bound and soluble proteins. A soluble protein is also produced by proteolytic cleavage. [provided by RefSeq, May 2012],function:Receptor for interleukin-1 alpha (IL-1A), beta (IL-1B), and interleukin-1 receptor antagonist protein (IL-1ra),similarity:Belongs to the interleukin-1 receptor family.,similarity:Contains 3 Ig-like C2-type (immunoglobulin-like) domains.,

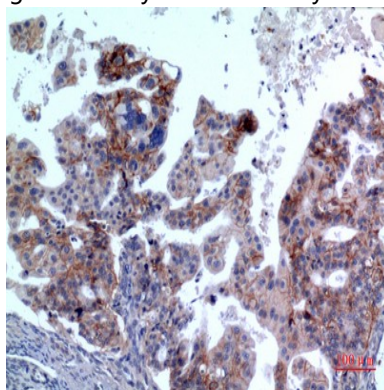
## Research Area

MAPK\_ERK\_Growth;MAPK\_G\_Protein;Cytokine-cytokine receptor interaction;Hematopoietic cell lineage;

## Image Data

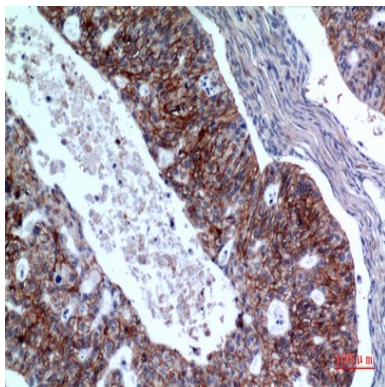


Western Blot analysis of PC12 cells using IL-1RII Polyclonal Antibody.. Secondary antibody was diluted at 1:20000

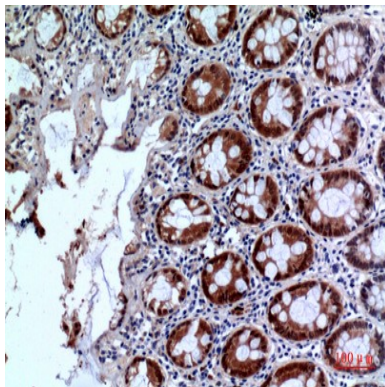


Immunohistochemical analysis of paraffin-embedded human-Ovarian-cancer, antibody was diluted at 1:100

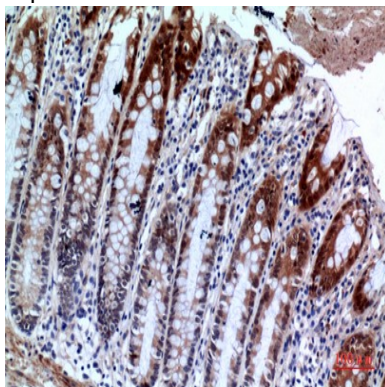
**Product Name: IL-1RII Rabbit Polyclonal Antibody**  
**Catalog #: APRab12527**



Immunohistochemical analysis of paraffin-embedded human-Ovarian-cancer, antibody was diluted at 1:100



Immunohistochemical analysis of paraffin-embedded human-colon, antibody was diluted at 1:100



Immunohistochemical analysis of paraffin-embedded human-colon, antibody was diluted at 1:100

## **Note**

For research use only.