

Summary

Production Name	IL-1R9 Rabbit Polyclonal Antibody
Description	Rabbit Polyclonal Antibody
Host	Rabbit
Application	WB
Reactivity	Human,Mouse

Performance

Conjugation	Unconjugated
Modification	Unmodified
Isotype	IgG
Clonality	Polyclonal
Form	Liquid
Storage	Store at 4°C short term. Aliquot and store at -20°C long term. Avoid freeze/thaw cycles.
Buffer	Liquid in PBS containing 50% glycerol, 0.5% BSA and 0.02% New type preservative N.
Purification	Affinity purification

Immunogen

Gene Name	IL1RAPL2
Alternative Names	IL1RAPL2; IL1R9; X-linked interleukin-1 receptor accessory protein-like 2; IL-1 receptor accessory protein-like 2; IL-1-RAPL-2; IL-1RAPL-2; IL1RAPL-2; IL1RAPL-2-related protein; Interleukin-1 receptor 9; IL-1R-9; IL-1R9; Three immunoglobuli
Gene ID	26280.0
SwissProt ID	Q9NP60.The antiserum was produced against synthesized peptide derived from human IL1RAPL2. AA range:141-190

Application

Dilution Ratio	WB 1:500-1:2000. ELISA: 1:20000.
Molecular Weight	79kD

Product Name: IL-1R9 Rabbit Polyclonal Antibody
Catalog #: APRab12523



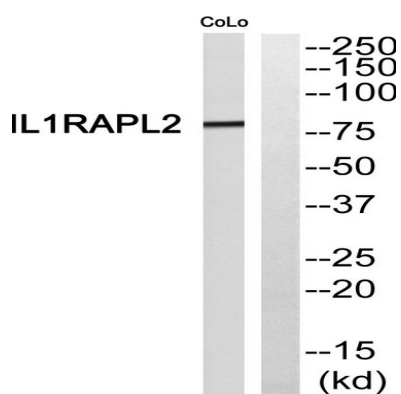
Background

The protein encoded by this gene is a member of the interleukin 1 receptor family. This protein is similar to the interleukin 1 accessory proteins, and is most closely related to interleukin 1 receptor accessory protein-like 1 (IL1RAPL1). This gene and IL1RAPL1 are located at a region on chromosome X that is associated with X-linked non-syndromic mental retardation.

[provided by RefSeq, Jul 2008],similarity:Belongs to the interleukin-1 receptor family.,similarity:Contains 1 TIR domain.,similarity:Contains 3 Ig-like C2-type (immunoglobulin-like) domains.,tissue specificity:Detected at low levels in fetal and adult brain, in particular in the frontal lobe, temporal lobe and cerebellum. Detected at very low levels in skin, liver, fetal ovary and in placenta.,

Research Area

Image Data



Western blot analysis of IL1RAPL2 Antibody. The lane on the right is blocked with the IL1RAPL2 peptide.

Note

For research use only.