

**Product Name: IL-17F Rabbit Polyclonal Antibody**  
**Catalog #: APRab12508**



## Summary

<b>Production Name</b>	IL-17F Rabbit Polyclonal Antibody
<b>Description</b>	Rabbit Polyclonal Antibody
<b>Host</b>	Rabbit
<b>Application</b>	IHC,ELISA
<b>Reactivity</b>	Human,Rat,Mouse

## Performance

<b>Conjugation</b>	Unconjugated
<b>Modification</b>	Unmodified
<b>Isotype</b>	IgG
<b>Clonality</b>	Polyclonal
<b>Form</b>	Liquid
<b>Storage</b>	Store at 4°C short term. Aliquot and store at -20°C long term. Avoid freeze/thaw cycles.
<b>Buffer</b>	Liquid in PBS containing 50% glycerol, 0.5% BSA and 0.02% New type preservative N.
<b>Purification</b>	Affinity purification

## Immunogen

<b>Gene Name</b>	IL17F IL24
<b>Alternative Names</b>	Interleukin-17F (IL-17F;Cytokine ML-1;Interleukin-24;IL-24)
<b>Gene ID</b>	112744.0
<b>SwissProt ID</b>	Q96PD4.Synthetic peptide from human protein at AA range: 81-130

## Application

<b>Dilution Ratio</b>	IHC-p 1:50-200, ELISA 1:10000-20000.
<b>Molecular Weight</b>	

## Background

The protein encoded by this gene is a cytokine that shares sequence similarity with IL17. This cytokine is expressed by

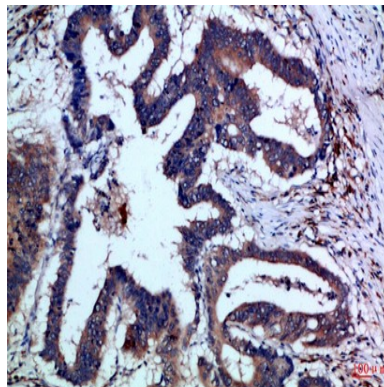
**Product Name: IL-17F Rabbit Polyclonal Antibody**  
**Catalog #: APRab12508**



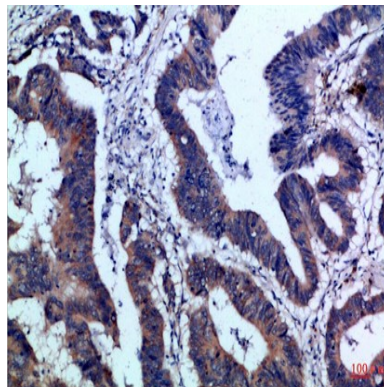
activated T cells, and has been shown to stimulate the production of several other cytokines, including IL6, IL8, and CSF2/GM-CSF. This cytokine is also found to inhibit the angiogenesis of endothelial cells and induce endothelial cells to produce IL2, TGF $\beta$ 1/TGF $\beta$ , and monocyte chemoattractant protein-1. [provided by RefSeq, Jul 2008],function:Stimulates the production of other cytokines such as IL-6, IL-8 and granulocyte colony-stimulating factor, and can regulate cartilage matrix turnover. Stimulates PBMC and T-cell proliferation. Inhibits angiogenesis.,online information:Interleukin-17 entry,similarity:Belongs to the IL-17 family.,subunit:Homodimer; disulfide-linked.,tissue specificity:Expressed in activated, but not resting, CD4+ T-cells and activated monocytes.,

## Research Area

## Image Data



Immunohistochemical analysis of paraffin-embedded Human-colon-cancer, antibody was diluted at 1:100



Immunohistochemical analysis of paraffin-embedded Human-colon-cancer, antibody was diluted at 1:100

## Note

For research use only.