

## Summary

<b>Production Name</b>	IL-12A Rabbit Polyclonal Antibody
<b>Description</b>	Rabbit Polyclonal Antibody
<b>Host</b>	Rabbit
<b>Application</b>	WB,IHC,IF,ELISA
<b>Reactivity</b>	Human,Mouse,Rat

## Performance

<b>Conjugation</b>	Unconjugated
<b>Modification</b>	Unmodified
<b>Isotype</b>	IgG
<b>Clonality</b>	Polyclonal
<b>Form</b>	Liquid
<b>Storage</b>	Store at 4°C short term. Aliquot and store at -20°C long term. Avoid freeze/thaw cycles.
<b>Buffer</b>	Liquid in PBS containing 50% glycerol, 0.5% BSA and 0.02% New type preservative N.
<b>Purification</b>	Affinity purification

## Immunogen

<b>Gene Name</b>	IL12A IL12A; NKSF1; Interleukin-12 subunit alpha; IL-12A; Cytotoxic lymphocyte maturation
<b>Alternative Names</b>	factor 35 kDa subunit; CLMF p35; IL-12 subunit p35; NK cell stimulatory factor chain 1; NKSF1
<b>Gene ID</b>	3592.0
<b>SwissProt ID</b>	P29459.The antiserum was produced against synthesized peptide derived from human IL-12A. AA range:16-65

## Application

<b>Dilution Ratio</b>	WB 1:500 - 1:2000.IHC-p:1:50-300 ELISA: 1:20000.. IF 1:50-200
<b>Molecular Weight</b>	25kD

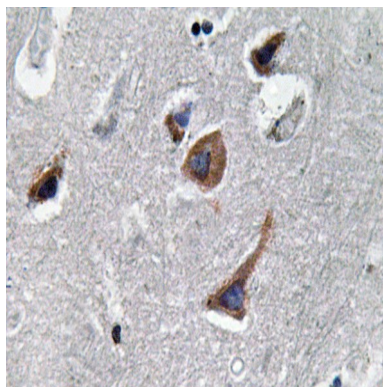
## Background

This gene encodes a subunit of a cytokine that acts on T and natural killer cells, and has a broad array of biological activities. The cytokine is a disulfide-linked heterodimer composed of the 35-kD subunit encoded by this gene, and a 40-kD subunit that is a member of the cytokine receptor family. This cytokine is required for the T-cell-independent induction of interferon (IFN)-gamma, and is important for the differentiation of both Th1 and Th2 cells. The responses of lymphocytes to this cytokine are mediated by the activator of transcription protein STAT4. Nitric oxide synthase 2A (NOS2A/NOS2) is found to be required for the signaling process of this cytokine in innate immunity. [provided by RefSeq, Jul 2008],function:Cytokine that can act as a growth factor for activated T and NK cells, enhance the lytic activity of NK/lymphokine-activated killer cells, and stimulate the production of IFN-gamma by resting PBMC.,online information:Interleukin-12 entry,similarity:Belongs to the IL-6 superfamily.,subunit:Heterodimer with IL12B; disulfide-linked. The heterodimer is known as interleukin IL-12.,

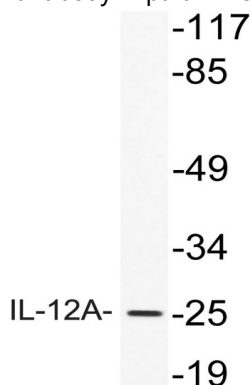
## Research Area

Cytokine-cytokine receptor interaction;Toll\_Like;RIG-I-like receptor;Jak\_STAT;Type I diabetes mellitus;Allograft rejection;

## Image Data

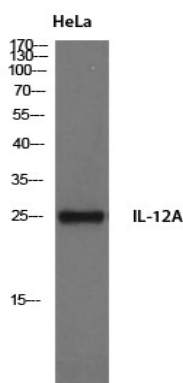


Immunohistochemistry analysis of IL-12A antibody in paraffin-embedded human brain tissue.

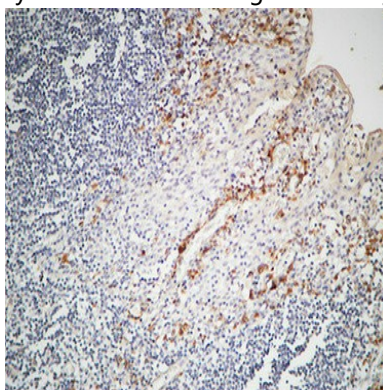


Western blot analysis of lysate from HeLa cells, using IL-12A antibody.

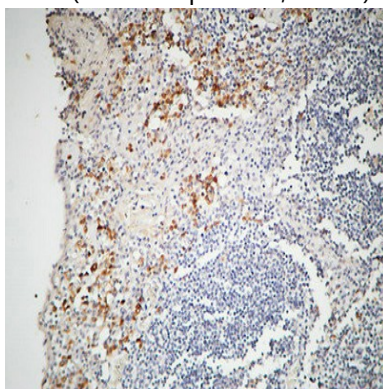
**Product Name: IL-12A Rabbit Polyclonal Antibody**  
**Catalog #: APRab12492**



Western Blot analysis of HeLa cells using IL-12A Polyclonal Antibody

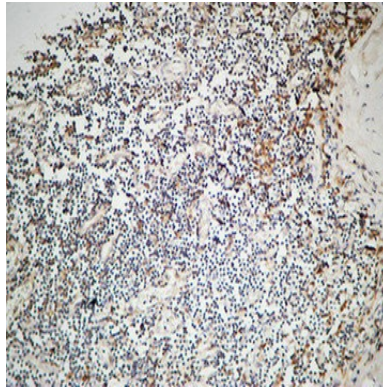


Immunohistochemical analysis of paraffin-embedded Human Amygdala. 1, Antibody was diluted at 1:200 (4°,overnight) . 2, High-pressure and temperature EDTA, pH8.0 was used for antigen retrieval. 3,Secondary antibody was diluted at 1:200 (room temperature, 30min) .



Immunohistochemical analysis of paraffin-embedded Human Amygdala. 1, Antibody was diluted at 1:200 (4°,overnight) . 2, High-pressure and temperature EDTA, pH8.0 was used for antigen retrieval. 3,Secondary antibody was diluted at 1:200 (room temperature, 30min) .

**Product Name: IL-12A Rabbit Polyclonal Antibody**  
**Catalog #: APRab12492**



Immunohistochemical analysis of paraffin-embedded Human Amygdala. 1, Antibody was diluted at 1:200 (4°,overnight) . 2, High-pressure and temperature EDTA, pH8.0 was used for antigen retrieval. 3,Secondary antibody was diluted at 1:200 (room temperature, 30min) .

**Note**

For research use only.