

**Product Name: IL-11 Rabbit Polyclonal Antibody**  
**Catalog #: APRab12487**



## Summary

<b>Production Name</b>	IL-11 Rabbit Polyclonal Antibody
<b>Description</b>	Rabbit Polyclonal Antibody
<b>Host</b>	Rabbit
<b>Application</b>	IHC,ELISA
<b>Reactivity</b>	Human,Mouse,Rat

## Performance

<b>Conjugation</b>	Unconjugated
<b>Modification</b>	Unmodified
<b>Isotype</b>	IgG
<b>Clonality</b>	Polyclonal
<b>Form</b>	Liquid
<b>Storage</b>	Store at 4°C short term. Aliquot and store at -20°C long term. Avoid freeze/thaw cycles.
<b>Buffer</b>	Liquid in PBS containing 50% glycerol, 0.5% BSA and 0.02% New type preservative N.
<b>Purification</b>	Affinity purification

## Immunogen

<b>Gene Name</b>	IL11
<b>Alternative Names</b>	IL11; Interleukin-11; IL-11; Adipogenesis inhibitory factor; AGIF; Oprelvekin
<b>Gene ID</b>	3589.0
<b>SwissProt ID</b>	P20809.The antiserum was produced against synthesized peptide derived from human IL-11. AA range:27-76

## Application

<b>Dilution Ratio</b>	IHC 1:100-1:300 ELISA: 1:5000
<b>Molecular Weight</b>	

## Background

The protein encoded by this gene is a member of the gp130 family of cytokines. These cytokines drive the assembly of

**Product Name: IL-11 Rabbit Polyclonal Antibody**  
**Catalog #: APRab12487**



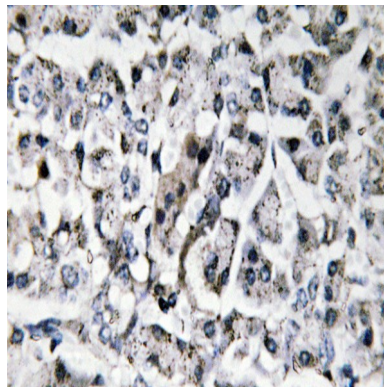
---

multisubunit receptor complexes, all of which contain at least one molecule of the transmembrane signaling receptor IL6ST (gp130). This cytokine is shown to stimulate the T-cell-dependent development of immunoglobulin-producing B cells. It is also found to support the proliferation of hematopoietic stem cells and megakaryocyte progenitor cells. Alternatively spliced transcript variants encoding distinct isoforms have been found for this gene. [provided by RefSeq, Jun 2012],function:Directly stimulates the proliferation of hematopoietic stem cells and megakaryocyte progenitor cells and induces megakaryocyte maturation resulting in increased platelet production.,online information:Clinical information on Neumega,online information:Interleukin-11 entry,pharmaceutical:Available under the name Neumega (Wyeth). Used for the prevention of severe thrombocytopenia and the reduction of the need for platelet transfusion following myelosuppressive chemotherapy.,similarity:Belongs to the IL-6 superfamily.,

## Research Area

Cytokine-cytokine receptor interaction;Jak\_STAT;Hematopoietic cell lineage;

## Image Data



Immunohistochemistry analysis of IL-11 antibody in paraffin-embedded human pancreas tissue.

## Note

For research use only.