

Summary

Production Name	IL-10R α Rabbit Polyclonal Antibody
Description	Rabbit Polyclonal Antibody
Host	Rabbit
Application	WB
Reactivity	Human,Rat,Mouse

Performance

Conjugation	Unconjugated
Modification	Unmodified
Isotype	IgG
Clonality	Polyclonal
Form	Liquid
Storage	Store at 4°C short term. Aliquot and store at -20°C long term. Avoid freeze/thaw cycles.
Buffer	Liquid in PBS containing 50% glycerol, 0.5% BSA and 0.02% New type preservative N.
Purification	Affinity purification

Immunogen

Gene Name	IL10RA
Alternative Names	IL10RA; IL10R; Interleukin-10 receptor subunit alpha; IL-10 receptor subunit alpha; IL-10R subunit alpha; IL-10RA; CDw210a; Interleukin-10 receptor subunit 1; IL-10R subunit 1; IL-10R1; CD210
Gene ID	3587.0
SwissProt ID	Q13651.The antiserum was produced against synthesized peptide derived from the Internal region of human IL10RA. AA range:151-200

Application

Dilution Ratio	WB 1:500-1:2000. ELISA: 1:10000.
Molecular Weight	63kD

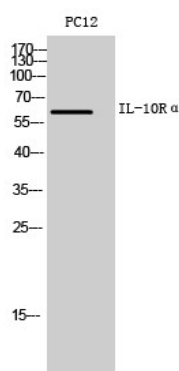
Background

The protein encoded by this gene is a receptor for interleukin 10. This protein is structurally related to interferon receptors. It has been shown to mediate the immunosuppressive signal of interleukin 10, and thus inhibits the synthesis of proinflammatory cytokines. This receptor is reported to promote survival of progenitor myeloid cells through the insulin receptor substrate-2/PI 3-kinase/AKT pathway. Activation of this receptor leads to tyrosine phosphorylation of JAK1 and TYK2 kinases. Two transcript variants, one protein-coding and the other not protein-coding, have been found for this gene. [provided by RefSeq, Jan 2009],function:Receptor for IL10; binds IL10 with a high affinity.,similarity:Belongs to the type II cytokine receptor family.,tissue specificity:Spleen, thymus, and PBMC. Weak expression in pancreas, skeletal muscle, brain, heart, and kidney. Placenta, lung, and liver showed intermediate levels. Monocytes, B-cells, large granular lymphocytes, and T-cells express high levels.,

Research Area

Cytokine-cytokine receptor interaction;Jak_STAT;

Image Data



Western Blot analysis of PC12 cells using IL-10R α Polyclonal Antibody.. Secondary antibody was diluted at 1:20000

Note

For research use only.