
Summary

Production Name	IL-10R α Rabbit Polyclonal Antibody
Description	Rabbit Polyclonal Antibody
Host	Rabbit
Application	IF, WB, ELISA
Reactivity	Human, Rat, Mouse

Performance

Conjugation	Unconjugated
Modification	Unmodified
Isotype	IgG
Clonality	Polyclonal
Form	Liquid
Storage	Store at 4°C short term. Aliquot and store at -20°C long term. Avoid freeze/thaw cycles.
Buffer	Liquid in PBS containing 50% glycerol, 0.5% BSA and 0.02% New type preservative N.
Purification	Affinity purification

Immunogen

Gene Name	IL10RA
Alternative Names	IL10RA; IL10R; Interleukin-10 receptor subunit alpha; IL-10 receptor subunit alpha; IL-10R subunit alpha; IL-10RA; CDw210a; Interleukin-10 receptor subunit 1; IL-10R subunit 1; IL-10R1; CD antigen CD210
Gene ID	3587.0
SwissProt ID	Q13651. The antiserum was produced against synthesized peptide derived from human IL-10R alpha. AA range: 462-511

Application

Dilution Ratio	WB 1:500 - 1:2000. IF 1:200 - 1:1000. ELISA: 1:10000. Not yet tested in other applications.
-----------------------	---

Product Name: IL-10R α Rabbit Polyclonal Antibody
Catalog #: APRab12485



Molecular Weight 63kD

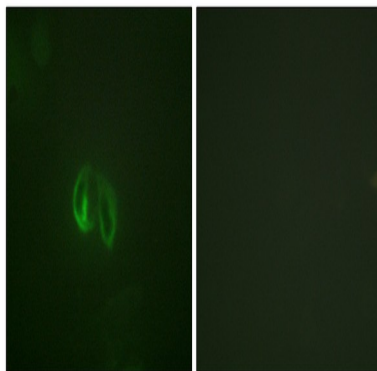
Background

The protein encoded by this gene is a receptor for interleukin 10. This protein is structurally related to interferon receptors. It has been shown to mediate the immunosuppressive signal of interleukin 10, and thus inhibits the synthesis of proinflammatory cytokines. This receptor is reported to promote survival of progenitor myeloid cells through the insulin receptor substrate-2/PI 3-kinase/AKT pathway. Activation of this receptor leads to tyrosine phosphorylation of JAK1 and TYK2 kinases. Two transcript variants, one protein-coding and the other not protein-coding, have been found for this gene. [provided by RefSeq, Jan 2009],function:Receptor for IL10; binds IL10 with a high affinity.,similarity:Belongs to the type II cytokine receptor family.,tissue specificity:Spleen, thymus, and PBMC. Weak expression in pancreas, skeletal muscle, brain, heart, and kidney. Placenta, lung, and liver showed intermediate levels. Monocytes, B-cells, large granular lymphocytes, and T-cells express high levels.,

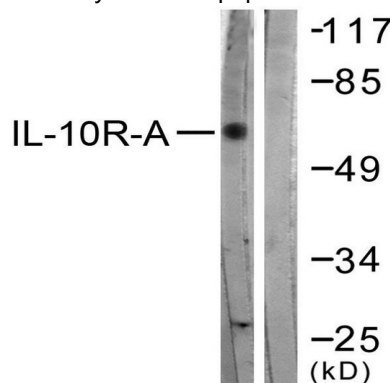
Research Area

Cytokine-cytokine receptor interaction;Jak_STAT;

Image Data



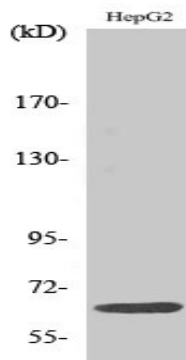
Immunofluorescence analysis of HepG2 cells, using IL-10R alpha Antibody. The picture on the right is blocked with the synthesized peptide.



Product Name: IL-10R α Rabbit Polyclonal Antibody
Catalog #: APRab12485



Western blot analysis of lysates from HepG2 cells, treated with Na₂VO₃ 0.3nM 40', using IL-10R alpha Antibody. The lane on the right is blocked with the synthesized peptide.



Western Blot analysis of various cells using IL-10R α Polyclonal Antibody

Note

For research use only.