

---

## Summary

<b>Production Name</b>	IL-10 Rabbit Polyclonal Antibody
<b>Description</b>	Rabbit Polyclonal Antibody
<b>Host</b>	Rabbit
<b>Application</b>	WB,IHC,IF,ELISA
<b>Reactivity</b>	Human,Mouse,Rat

## Performance

<b>Conjugation</b>	Unconjugated
<b>Modification</b>	Unmodified
<b>Isotype</b>	IgG
<b>Clonality</b>	Polyclonal
<b>Form</b>	Liquid
<b>Storage</b>	Store at 4°C short term. Aliquot and store at -20°C long term. Avoid freeze/thaw cycles.
<b>Buffer</b>	Liquid in PBS containing 50% glycerol, 0.5% BSA and 0.02% New type preservative N.
<b>Purification</b>	Affinity purification

## Immunogen

<b>Gene Name</b>	IL10
<b>Alternative Names</b>	IL10; Interleukin-10; IL-10; Cytokine synthesis inhibitory factor; CSIF
<b>Gene ID</b>	3586.0
<b>SwissProt ID</b>	P22301.The antiserum was produced against synthesized peptide derived from the Internal region of human IL10. AA range:71-120

## Application

<b>Dilution Ratio</b>	WB 1:500 - 1:2000. IHC-p: 1:100-300 ELISA: 1:20000. IF 1:100-300 Not yet tested in other applications.
<b>Molecular Weight</b>	20kD

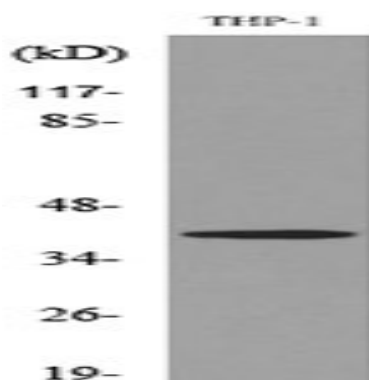
## Background

The protein encoded by this gene is a cytokine produced primarily by monocytes and to a lesser extent by lymphocytes. This cytokine has pleiotropic effects in immunoregulation and inflammation. It down-regulates the expression of Th1 cytokines, MHC class II Ags, and costimulatory molecules on macrophages. It also enhances B cell survival, proliferation, and antibody production. This cytokine can block NF-kappa B activity, and is involved in the regulation of the JAK-STAT signaling pathway. Knockout studies in mice suggested the function of this cytokine as an essential immunoregulator in the intestinal tract. Mutations in this gene are associated with an increased susceptibility to HIV-1 infection and rheumatoid arthritis.[provided by RefSeq, May 2011],disease:Defects in IL10 are a cause of susceptibility to Crohn disease (CD) [MIM:266600]. CD is a form of remitting inflammatory bowel disease (IBD). CD may involve any part of the gastrointestinal tract, but most frequently the terminal ileum and colon. Bowel inflammation is transmural and discontinuous. Crohn disease is commonly classified as autoimmune disease.,function:Inhibits the synthesis of a number of cytokines, including IFN-gamma, IL-2, IL-3, TNF and GM-CSF produced by activated macrophages and by helper T-cells.,online information:Interleukin-10 entry,online information:The Singapore human mutation and polymorphism database,similarity:Belongs to the IL-10 family.,subunit:Homodimer.,tissue specificity:Produced by a variety of cell lines, including T-cells, macrophages, mast cells and other cell types.,

## Research Area

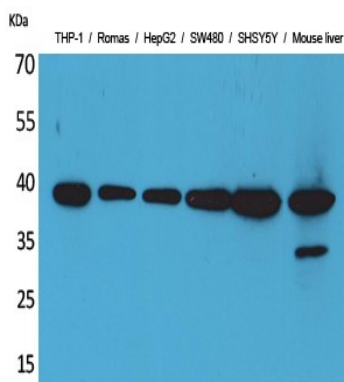
Cytokine-cytokine receptor interaction;Jak\_STAT;T\_Cell\_Receptor;Intestinal immune network for IgA production;Asthma;Autoimmune thyroid disease;Systemic lupus erythematosus;Allograft rejection;

## Image Data



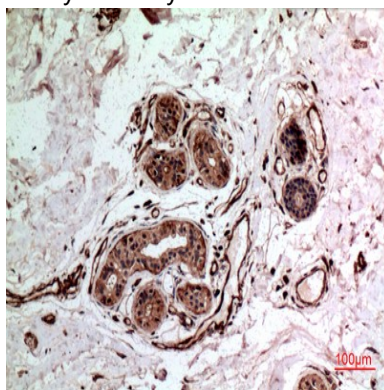
Western blot analysis of lysate from THP-1 cells, using IL10 Antibody.

**Product Name: IL-10 Rabbit Polyclonal Antibody**  
**Catalog #: APRab12484**

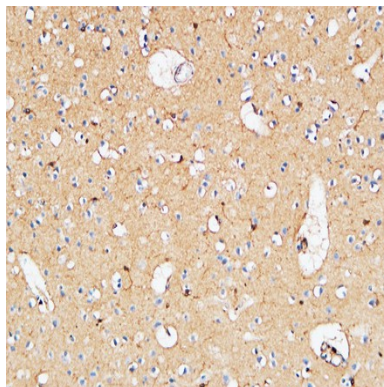


Western Blot analysis of THP-1, Romas, HepG2, SW480, SHSY5Y, Mouse liver cells using IL-10 Polyclonal Antibody..

Secondary antibody was diluted at 1:20000

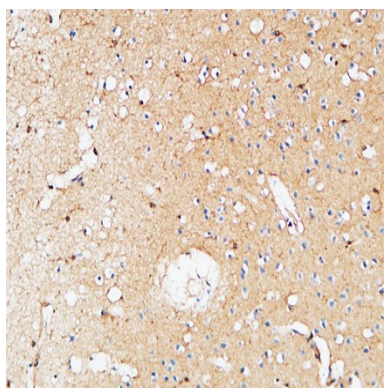


Immunohistochemical analysis of paraffin-embedded human-breast-cancer, antibody was diluted at 1:100

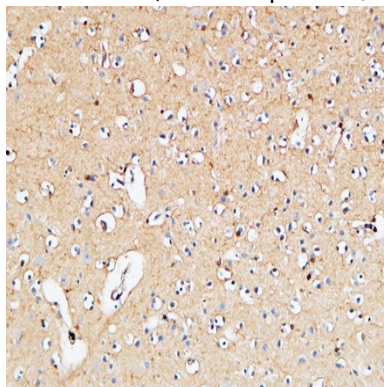


Immunohistochemical analysis of paraffin-embedded Human Cerebral cortex. 1, Antibody was diluted at 1:200 (4°,overnight) . 2, High-pressure and temperature EDTA, pH8.0 was used for antigen retrieval. 3,Secondary antibody was diluted at 1:200 (room temperature, 30min) .

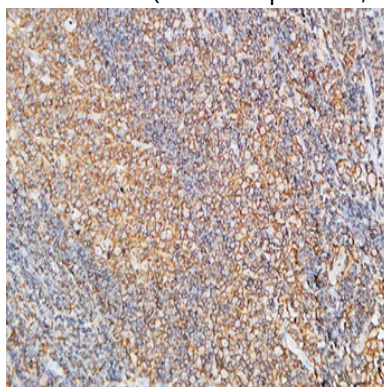
**Product Name: IL-10 Rabbit Polyclonal Antibody**  
**Catalog #: APRab12484**



Immunohistochemical analysis of paraffin-embedded Human Cerebral cortex. 1, Antibody was diluted at 1:200 (4°,overnight) . 2, High-pressure and temperature EDTA, pH8.0 was used for antigen retrieval. 3,Secondary antibody was diluted at 1:200 (room temperature, 30min) .

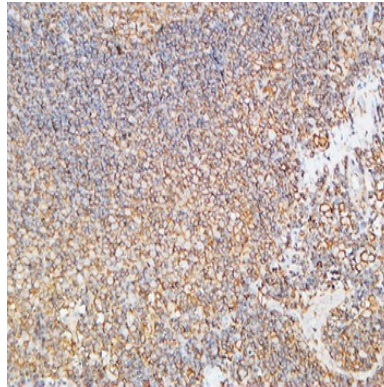


Immunohistochemical analysis of paraffin-embedded Human Cerebral cortex. 1, Antibody was diluted at 1:200 (4°,overnight) . 2, High-pressure and temperature EDTA, pH8.0 was used for antigen retrieval. 3,Secondary antibody was diluted at 1:200 (room temperature, 30min) .

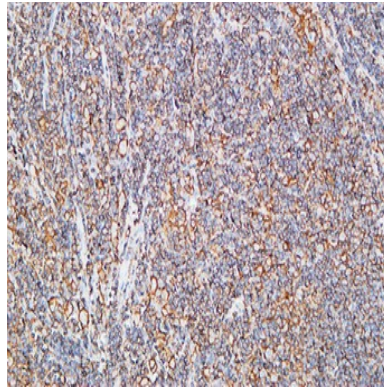


Immunohistochemical analysis of paraffin-embedded Human lymphoma. 1, Antibody was diluted at 1:200 (4°,overnight) . 2, High-pressure and temperature EDTA, pH8.0 was used for antigen retrieval. 3,Secondary antibody was diluted at 1:200 (room temperature, 30min) .

**Product Name: IL-10 Rabbit Polyclonal Antibody**  
**Catalog #: APRab12484**



Immunohistochemical analysis of paraffin-embedded Human lymphoma. 1, Antibody was diluted at 1:200 (4°,overnight) .  
2, High-pressure and temperature EDTA, pH8.0 was used for antigen retrieval. 3,Secondary antibody was diluted at  
1:200 (room temperature, 30min) .



Immunohistochemical analysis of paraffin-embedded Human lymphoma. 1, Antibody was diluted at 1:200 (4°,overnight) .  
2, High-pressure and temperature EDTA, pH8.0 was used for antigen retrieval. 3,Secondary antibody was diluted at  
1:200 (room temperature, 30min) .

## **Note**

For research use only.