

Summary

Production Name	IGSF4D Rabbit Polyclonal Antibody
Description	Rabbit Polyclonal Antibody
Host	Rabbit
Application	WB,ELISA
Reactivity	Human,Mouse,Rat

Performance

Conjugation	Unconjugated
Modification	Unmodified
Isotype	IgG
Clonality	Polyclonal
Form	Liquid
Storage	Store at 4°C short term. Aliquot and store at -20°C long term. Avoid freeze/thaw cycles.
Buffer	Liquid in PBS containing 50% glycerol, 0.5% BSA and 0.02% New type preservative N.
Purification	Affinity purification

Immunogen

Gene Name	CADM2
Alternative Names	CADM2; IGSF4D; NECL3; Cell adhesion molecule 2; Immunoglobulin superfamily member 4D; IgSF4D; Nectin-like protein 3; NECL-3; Synaptic cell adhesion molecule 2; SynCAM 2
Gene ID	253559.0
SwissProt ID	Q8N3J6.The antiserum was produced against synthesized peptide derived from human CADM2. AA range:131-180

Application

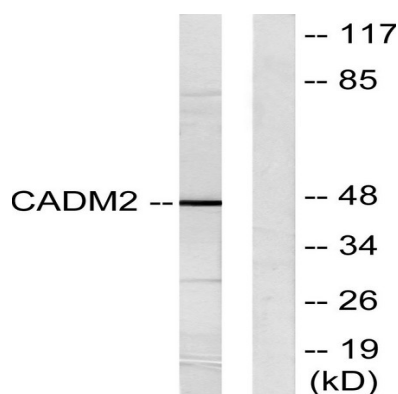
Dilution Ratio	WB 1:500 - 1:2000. ELISA: 1:10000
Molecular Weight	47kD

Background

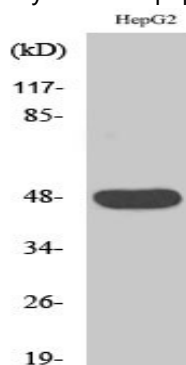
cell adhesion molecule 2(CADM2) Homo sapiens This gene encodes a member of the synaptic cell adhesion molecule 1 (SynCAM) family which belongs to the immunoglobulin (Ig) superfamily. The encoded protein has three Ig-like domains and a cytosolic protein 4.1 binding site near the C-terminus. Proteins belonging to the protein 4.1 family crosslink spectrin and interact with other cytoskeletal proteins. Multiple transcript variants encoding different isoforms have been found for this gene. [provided by RefSeq, Feb 2012],similarity:Belongs to the nectin family.,similarity:Contains 1 Ig-like V-type (immunoglobulin-like) domain.,similarity:Contains 2 Ig-like C2-type (immunoglobulin-like) domains.,

Research Area

Image Data



Western blot analysis of lysates from HepG2 cells, using CADM2 Antibody. The lane on the right is blocked with the synthesized peptide.



Western Blot analysis of various cells using IGSF4D Polyclonal Antibody

Note

For research use only.

Product Name: IGSF4D Rabbit Polyclonal Antibody
Catalog #: APRab12456

