

**Product Name: IGFL2 Rabbit Polyclonal Antibody**  
**Catalog #: APRab12439**



## Summary

<b>Production Name</b>	IGFL2 Rabbit Polyclonal Antibody
<b>Description</b>	Rabbit Polyclonal Antibody
<b>Host</b>	Rabbit
<b>Application</b>	WB
<b>Reactivity</b>	Human,Rat,Mouse

## Performance

<b>Conjugation</b>	Unconjugated
<b>Modification</b>	Unmodified
<b>Isotype</b>	IgG
<b>Clonality</b>	Polyclonal
<b>Form</b>	Liquid
<b>Storage</b>	Store at 4°C short term. Aliquot and store at -20°C long term. Avoid freeze/thaw cycles.
<b>Buffer</b>	Liquid in PBS containing 50% glycerol, and 0.02% New type preservative N.
<b>Purification</b>	Affinity purification

## Immunogen

<b>Gene Name</b>	IGFL2 UNQ645/PRO1275
<b>Alternative Names</b>	
<b>Gene ID</b>	147920.0
<b>SwissProt ID</b>	Q6UWQ7.Synthesized peptide derived from part region of human protein AA range: 1-50

## Application

<b>Dilution Ratio</b>	WB 1:500-2000 ELISA 1:5000-20000
<b>Molecular Weight</b>	13kD

## Background

IGF like family member 2(IGFL2) Homo sapiens IGFL2 belongs to the insulin-like growth factor (IGF; see MIM 147440)

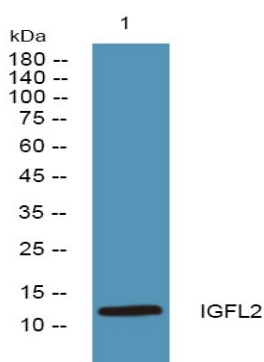
**Product Name: IGFL2 Rabbit Polyclonal Antibody**  
**Catalog #: APRab12439**



family of signaling molecules that play critical roles in cellular energy metabolism and in growth and development, especially prenatal growth (Emtage et al., 2006 [PubMed 16890402]).[supplied by OMIM, Mar 2008],similarity:Belongs to the IGFL family.,

## Research Area

## Image Data



Western blot analysis of lysates from SH-SY5Y cells, primary antibody was diluted at 1:1000, 4° over night

## Note

For research use only.