
Summary

| | |
|------------------------|--|
| Production Name | IFN- ω Rabbit Polyclonal Antibody |
| Description | Rabbit Polyclonal Antibody |
| Host | Rabbit |
| Application | WB,IHC, |
| Reactivity | Human,Rat,Mouse |

Performance

| | |
|---------------------|--|
| Conjugation | Unconjugated |
| Modification | Unmodified |
| Isotype | IgG |
| Clonality | Polyclonal |
| Form | Liquid |
| Storage | Store at 4°C short term. Aliquot and store at -20°C long term. Avoid freeze/thaw cycles. |
| Buffer | Liquid in PBS containing 50% glycerol, 0.5% BSA and 0.02% New type preservative N. |
| Purification | Affinity purification |

Immunogen

| | |
|--------------------------|---|
| Gene Name | IFNW1 |
| Alternative Names | IFNW1; Interferon omega-1; Interferon alpha-II-1 |
| Gene ID | 3467.0 |
| SwissProt ID | P05000.The antiserum was produced against synthesized peptide derived from the C-terminal region of human IFNW1. AA range:146-195 |

Application

| | |
|-------------------------|---|
| Dilution Ratio | WB 1:500 - 1:2000 IHC 1:100 - 1:300. ELISA: 1:20000.. |
| Molecular Weight | 22kD |

Background

Product Name: IFN- ω Rabbit Polyclonal Antibody
Catalog #: APRab12406

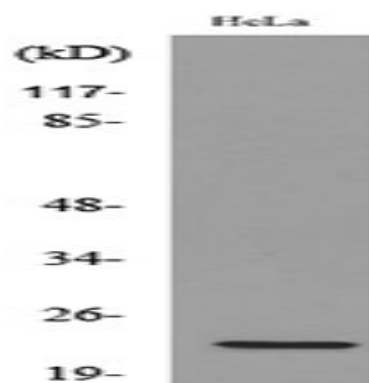


The protein encoded by this gene is an interferon and possesses antiviral activity. The encoded protein binds to the interferon alpha/beta receptor but not to the interferon gamma receptor. This intronless gene has several pseudogenes spread throughout the genome. [provided by RefSeq, Nov 2015],similarity:Belongs to the alpha/beta interferon family.,

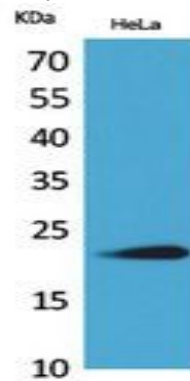
Research Area

Cytokine-cytokine receptor interaction;RIG-I-like receptor;Jak_STAT;

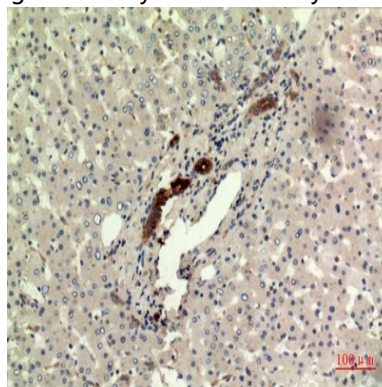
Image Data



Western blot analysis of lysate from HeLa cells, using IFNW1 Antibody.

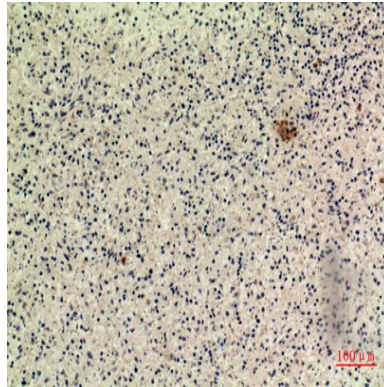


Western Blot analysis of HeLa cells using IFN- ω Polyclonal Antibody.. Secondary antibody was diluted at 1:20000



Immunohistochemical analysis of paraffin-embedded human-liver, antibody was diluted at 1:100

Product Name: IFN- ω Rabbit Polyclonal Antibody
Catalog #: APRab12406



Immunohistochemical analysis of paraffin-embedded human-spleen, antibody was diluted at 1:100

Note

For research use only.