

**Product Name: IFN- $\beta$  Rabbit Polyclonal Antibody**  
**Catalog #: APRab12402**



## Summary

<b>Production Name</b>	IFN- $\beta$ Rabbit Polyclonal Antibody
<b>Description</b>	Rabbit Polyclonal Antibody
<b>Host</b>	Rabbit
<b>Application</b>	IHC,
<b>Reactivity</b>	Human,Rat,Mouse

## Performance

<b>Conjugation</b>	Unconjugated
<b>Modification</b>	Unmodified
<b>Isotype</b>	IgG
<b>Clonality</b>	Polyclonal
<b>Form</b>	Liquid
<b>Storage</b>	Store at 4°C short term. Aliquot and store at -20°C long term. Avoid freeze/thaw cycles.
<b>Buffer</b>	Liquid in PBS containing 50% glycerol, 0.5% BSA and 0.02% New type preservative N.
<b>Purification</b>	Affinity purification

## Immunogen

<b>Gene Name</b>	IFNB1 IFB IFNB
<b>Alternative Names</b>	Interferon beta (IFN-beta;Fibroblast interferon)
<b>Gene ID</b>	3456.0
<b>SwissProt ID</b>	P01574.Synthetic peptide from human protein at AA range: 91-140

## Application

<b>Dilution Ratio</b>	IHC-p 1:50-200, ELISA 1:10000-20000.
<b>Molecular Weight</b>	

## Background

This gene encodes a cytokine that belongs to the interferon family of signaling proteins, which are released as part of the

**Product Name: IFN- $\beta$  Rabbit Polyclonal Antibody**  
**Catalog #: APRab12402**

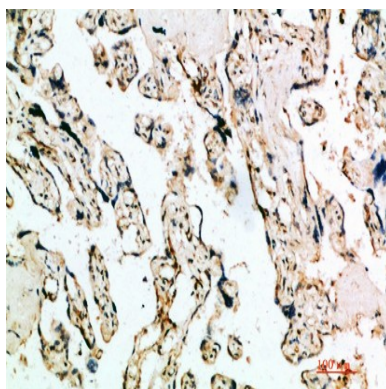


innate immune response to pathogens. The protein encoded by this gene belongs to the type I class of interferons, which are important for defense against viral infections. In addition, type I interferons are involved in cell differentiation and anti-tumor defenses. Following secretion in response to a pathogen, type I interferons bind a homologous receptor complex and induce transcription of genes such as those encoding inflammatory cytokines and chemokines. Overactivation of type I interferon secretion is linked to autoimmune diseases. Mice deficient for this gene display several phenotypes including defects in B cell maturation and increased susceptibility to viral infection. [provided by RefSeq, Sep 2015],function:Has antiviral, antibacterial and anticancer activities.,online information:Clinical information on Avonex,online information:Clinical information on Betaseron,pharmaceutical:Available under the names Avonex (Biogen), Betaseron (Berlex) and Rebif (Serono). Used in the treatment of multiple sclerosis (MS). Betaseron is a slightly modified form of IFNB1 with two residue substitutions.,similarity:Belongs to the alpha/beta interferon family.,subunit:Monomer.,

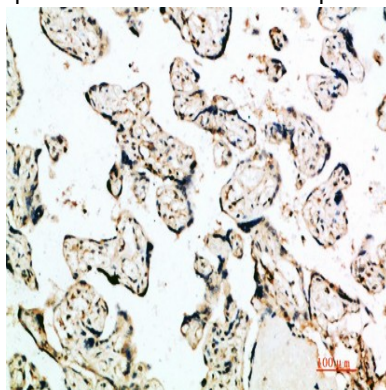
## Research Area

Cytokine-cytokine receptor interaction;Toll\_Like;RIG-I-like receptor;Cytosolic DNA-sensing pathway;Jak\_STAT;Natural killer cell mediated cytotoxicity;

## Image Data

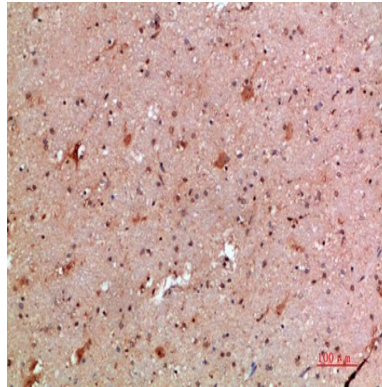


Immunohistochemical analysis of paraffin-embedded human-placenta, antibody was diluted at 1:200

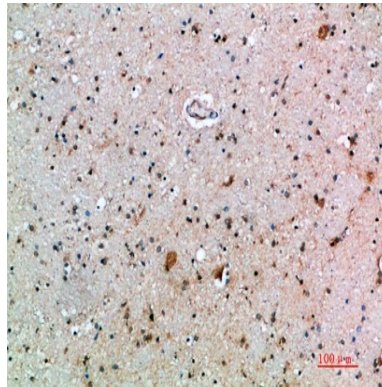


Immunohistochemical analysis of paraffin-embedded human-placenta, antibody was diluted at 1:200

**Product Name: IFN- $\beta$  Rabbit Polyclonal Antibody**  
**Catalog #: APRab12402**



Immunohistochemical analysis of paraffin-embedded human-brain, antibody was diluted at 1:200



Immunohistochemical analysis of paraffin-embedded human-brain, antibody was diluted at 1:200

### **Note**

For research use only.