

Summary

Production Name	IFN- α 1 Rabbit Polyclonal Antibody
Description	Rabbit Polyclonal Antibody
Host	Rabbit
Application	WB
Reactivity	Human,Rat,Mouse

Performance

Conjugation	Unconjugated
Modification	Unmodified
Isotype	IgG
Clonality	Polyclonal
Form	Liquid
Storage	Store at 4°C short term. Aliquot and store at -20°C long term. Avoid freeze/thaw cycles.
Buffer	Liquid in PBS containing 50% glycerol, 0.5% BSA and 0.02% New type preservative N.
Purification	Affinity purification

Immunogen

Gene Name	IFNA1/IFNA13
Alternative Names	IFNA1; IFNA13; Interferon alpha-1/13; IFN-alpha-1/13; Interferon alpha-D; LeIF D
Gene ID	3439.0
SwissProt ID	P01562.The antiserum was produced against synthesized peptide derived from the C-terminal region of human IFNA1/13. AA range:140-189

Application

Dilution Ratio	WB 1:500-1:2000. ELISA: 1:20000.
Molecular Weight	22kD

Background

The protein encoded by this gene is produced by macrophages and has antiviral activity. This gene is intronless and the

Product Name: IFN- α 1 Rabbit Polyclonal Antibody
Catalog #: APRab12400

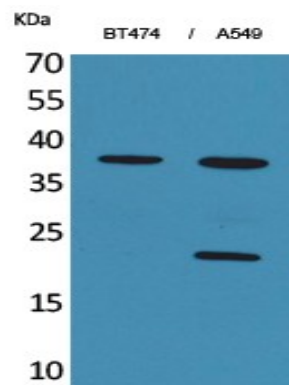


encoded protein is secreted. [provided by RefSeq, Sep 2011],function:Produced by macrophages, IFN-alpha have antiviral activities. Interferon stimulates the production of two enzymes: a protein kinase and an oligoadenylate synthetase.,miscellaneous:Interferons alpha-1 and alpha-13 have identical protein sequences.,polymorphism:Two forms exist; alpha-1a (shown here) and alpha-1b.,similarity:Belongs to the alpha/beta interferon family.,

Research Area

Cytokine-cytokine receptor interaction;Regulation of autophagy;Antigen processing and presentation;Toll_Like;RIG-I-like receptor;Cytosolic DNA-sensing pathway;Jak_STAT;Natural killer cell mediated cytotoxicity;Autoimmune thyroid disease;

Image Data



Western Blot analysis of BT474, A549 cells using IFN- α 1 Polyclonal Antibody.. Secondary antibody was diluted at 1:20000

Note

For research use only.