

Summary

Production Name	IFITM2 Rabbit Polyclonal Antibody
Description	Rabbit Polyclonal Antibody
Host	Rabbit
Application	WB
Reactivity	Human,Rat,Mouse

Performance

Conjugation	Unconjugated
Modification	Unmodified
Isotype	IgG
Clonality	Polyclonal
Form	Liquid
Storage	Store at 4°C short term. Aliquot and store at -20°C long term. Avoid freeze/thaw cycles.
Buffer	Liquid in PBS containing 50% glycerol, 0.5% BSA and 0.02% New type preservative N.
Purification	Affinity purification

Immunogen

Gene Name	IFITM2
Alternative Names	IFITM2; Interferon-induced transmembrane protein 2; Dispanin subfamily A member 2c; DSPA2c; Interferon-inducible protein 1-8D
Gene ID	10581.0
SwissProt ID	Q01629.The antiserum was produced against synthesized peptide derived from the Internal region of human IFITM2. AA range:1-50

Application

Dilution Ratio	WB 1:500-1:2000. ELISA: 1:20000.
Molecular Weight	15kD

Background

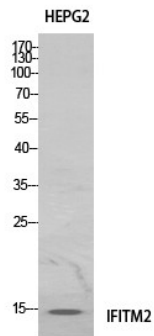
Product Name: IFITM2 Rabbit Polyclonal Antibody
Catalog #: APRab12382



induction:By alpha and gamma interferons.,similarity:Belongs to the CD225 family.,induction:By alpha and gamma interferons.,similarity:Belongs to the CD225 family.,

Research Area

Image Data



Western Blot analysis of HeLa cells using IFITM2 Polyclonal Antibody. Antibody was diluted at 1:1000. Secondary antibody was diluted at 1:20000

Note

For research use only.