
Summary

Production Name	IF3 Rabbit Polyclonal Antibody
Description	Rabbit Polyclonal Antibody
Host	Rabbit
Application	WB,ELISA
Reactivity	Human,Rat,Mouse

Performance

Conjugation	Unconjugated
Modification	Unmodified
Isotype	IgG
Clonality	Polyclonal
Form	Liquid
Storage	Store at 4°C short term. Aliquot and store at -20°C long term. Avoid freeze/thaw cycles.
Buffer	Liquid in PBS containing 50% glycerol, 0.5% BSA and 0.02% New type preservative N.
Purification	Affinity purification

Immunogen

Gene Name	MTIF3
Alternative Names	MTIF3; DC38; Translation initiation factor IF-3; mitochondrial; IF-3(Mt); IF-3Mt; IF3(mt); IF3mt
Gene ID	219402.0
SwissProt ID	Q9H2K0.The antiserum was produced against synthesized peptide derived from human MTIF3. AA range:69-118

Application

Dilution Ratio	WB 1:500 - 1:2000. ELISA: 1:40000
Molecular Weight	30kD

Product Name: IF3 Rabbit Polyclonal Antibody
Catalog #: APRab12366

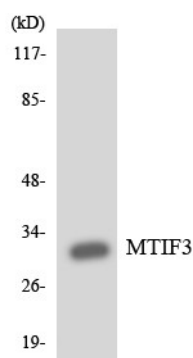


Background

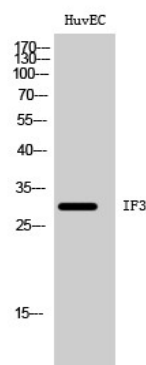
This gene encodes a translation initiation factor that is involved in mitochondrial protein synthesis. Polymorphism in this gene is associated with the onset of Parkinson's disease. Alternate splicing results in multiple transcript variants. A pseudogene of this gene is found on chromosome 5. [provided by RefSeq, Oct 2009],function:IF-3 binds to the 28S ribosomal subunit and shifts the equilibrium between 55S ribosomes and their 39S and 28S subunits in favor of the free subunits, thus enhancing the availability of 28S subunits on which protein synthesis initiation begins.,similarity:Belongs to the IF-3 family.,

Research Area

Image Data



Western blot analysis of the lysates from HUVEC cells using MTIF3 antibody.



Western Blot analysis of HuVEC cells using IF3 Polyclonal Antibody diluted at 1 : 500

Note

For research use only.