

---

## Summary

<b>Production Name</b>	ICAM-2 Rabbit Polyclonal Antibody
<b>Description</b>	Rabbit Polyclonal Antibody
<b>Host</b>	Rabbit
<b>Application</b>	WB,ELISA
<b>Reactivity</b>	Human,Rat,Mouse

## Performance

<b>Conjugation</b>	Unconjugated
<b>Modification</b>	Unmodified
<b>Isotype</b>	IgG
<b>Clonality</b>	Polyclonal
<b>Form</b>	Liquid
<b>Storage</b>	Store at 4°C short term. Aliquot and store at -20°C long term. Avoid freeze/thaw cycles.
<b>Buffer</b>	Liquid in PBS containing 50% glycerol, 0.5% BSA and 0.02% New type preservative N.
<b>Purification</b>	Affinity purification

## Immunogen

<b>Gene Name</b>	ICAM2
<b>Alternative Names</b>	ICAM2; Intercellular adhesion molecule 2; ICAM-2; CD antigen CD102
<b>Gene ID</b>	3384.0
<b>SwissProt ID</b>	P13598.The antiserum was produced against synthesized peptide derived from human ICAM2. AA range:151-200

## Application

<b>Dilution Ratio</b>	WB 1:500 - 1:2000. ELISA: 1:10000
<b>Molecular Weight</b>	30kD

## Background

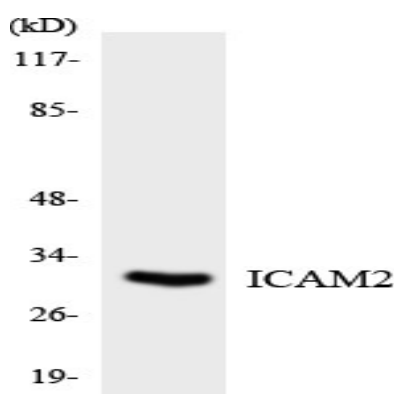
---

The protein encoded by this gene is a member of the intercellular adhesion molecule (ICAM) family. All ICAM proteins are type I transmembrane glycoproteins, contain 2-9 immunoglobulin-like C2-type domains, and bind to the leukocyte adhesion LFA-1 protein. This protein may play a role in lymphocyte recirculation by blocking LFA-1-dependent cell adhesion. It mediates adhesive interactions important for antigen-specific immune response, NK-cell mediated clearance, lymphocyte recirculation, and other cellular interactions important for immune response and surveillance. Several transcript variants encoding the same protein have been found for this gene. [provided by RefSeq, Jul 2008],function:ICAM proteins are ligands for the leukocyte adhesion protein LFA-1 (integrin alpha-L/beta-2). ICAM2 may play a role in lymphocyte recirculation by blocking LFA-1-dependent cell adhesion. It mediates adhesive interactions important for antigen-specific immune response, NK-cell mediated clearance, lymphocyte recirculation, and other cellular interactions important for immune response and surveillance.,online information:ICAM-2,similarity:Belongs to the immunoglobulin superfamily. ICAM family.,similarity:Contains 2 Ig-like C2-type (immunoglobulin-like) domains.,

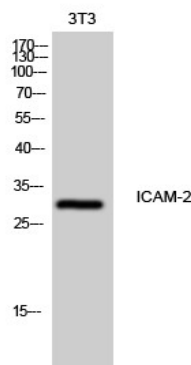
## Research Area

Cell adhesion molecules (CAMs);Natural killer cell mediated cytotoxicity;

## Image Data



Western blot analysis of the lysates from HT-29 cells using ICAM2 antibody.



Western Blot analysis of 3T3 cells using ICAM-2 Polyclonal Antibody

**Product Name: ICAM-2 Rabbit Polyclonal Antibody**  
**Catalog #: APRab12338**

---



**Note**

For research use only.