

Product Name: IBPL1 Rabbit Polyclonal Antibody
Catalog #: APRab12331



Summary

Production Name	IBPL1 Rabbit Polyclonal Antibody
Description	Rabbit Polyclonal Antibody
Host	Rabbit
Application	WB
Reactivity	Human,Mouse

Performance

Conjugation	Unconjugated
Modification	Unmodified
Isotype	IgG
Clonality	Polyclonal
Form	Liquid
Storage	Store at 4°C short term. Aliquot and store at -20°C long term. Avoid freeze/thaw cycles.
Buffer	Liquid in PBS containing 50% glycerol, and 0.02% New type preservative N.
Purification	Affinity purification

Immunogen

Gene Name	IGFBPL1 IGFBPRP4
Alternative Names	
Gene ID	347252.0
SwissProt ID	Q8WX77.Synthesized peptide derived from part region of human protein

Application

Dilution Ratio	WB 1:500-2000 ELISA 1:5000-20000
Molecular Weight	30kD

Background

function:IGF-binding proteins prolong the half-life of IGFs and have been shown to either inhibit or stimulate the growth promoting effects of the IGFs in cell culture. They alter the interaction of IGFs with their cell surface receptors (By similarity).

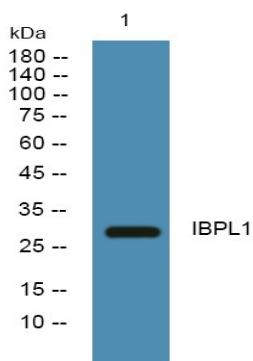
Product Name: IBPL1 Rabbit Polyclonal Antibody
Catalog #: APRab12331



May be a putative tumor suppressor protein.,induction:Down-regulated in multiple tumors.,similarity:Contains 1 Ig-like C2-type (immunoglobulin-like) domain.,similarity:Contains 1 IGFBP N-terminal domain.,similarity:Contains 1 Kazal-like domain.,tissue specificity:Expressed at the highest level in both brain and testis, with lower levels in the prostate, bladder and lung.,function:IGF-binding proteins prolong the half-life of IGFs and have been shown to either inhibit or stimulate the growth promoting effects of the IGFs in cell culture. They alter the interaction of IGFs with their cell surface receptors (By similarity). May be a putative tumor suppressor protein.,induction:Down-regulated in multiple tumors.,similarity:Contains 1 Ig-like C2-type (immunoglobulin-like) domain.,similarity:Contains 1 IGFBP N-terminal domain.,similarity:Contains 1 Kazal-like domain.,tissue specificity:Expressed at the highest level in both brain and testis, with lower levels in the prostate, bladder and lung.,

Research Area

Image Data



Western blot analysis of lysates from SW480 cells, primary antibody was diluted at 1:1000, 4°over night

Note

For research use only.