

---

## Summary

<b>Production Name</b>	HSP40 Rabbit Polyclonal Antibody
<b>Description</b>	Rabbit Polyclonal Antibody
<b>Host</b>	Rabbit
<b>Application</b>	IF,IHC,WB,
<b>Reactivity</b>	Human,Mouse,Rat

## Performance

<b>Conjugation</b>	Unconjugated
<b>Modification</b>	Unmodified
<b>Isotype</b>	IgG
<b>Clonality</b>	Polyclonal
<b>Form</b>	Liquid
<b>Storage</b>	Store at 4°C short term. Aliquot and store at -20°C long term. Avoid freeze/thaw cycles.
<b>Buffer</b>	Liquid in PBS containing 50% glycerol, 0.5% BSA and 0.02% New type preservative N.
<b>Purification</b>	Affinity purification

## Immunogen

<b>Gene Name</b>	DNAJB1 DNAJB1; DNAJ1; HDJ1; HSPF1; DnaJ homolog subfamily B member 1; DnaJ protein homolog 1; Heat shock 40 kDa protein 1; HSP40; Heat shock protein 40; Human DnaJ protein 1; hDj-1
<b>Alternative Names</b>	
<b>Gene ID</b>	3337.0
<b>SwissProt ID</b>	P25685.The antiserum was produced against synthesized peptide derived from human HSP40. AA range:271-320

## Application

<b>Dilution Ratio</b>	WB 1:500 - 1:2000 IHC 1:100 - 1:300. IF 1:200 - 1:1000. ELISA: 1:10000. Not yet tested in other applications.
-----------------------	---

**Product Name: HSP40 Rabbit Polyclonal Antibody**  
**Catalog #: APRab12245**



---

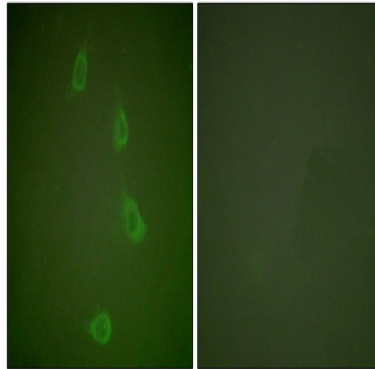
**Molecular Weight**                      45kD

## Background

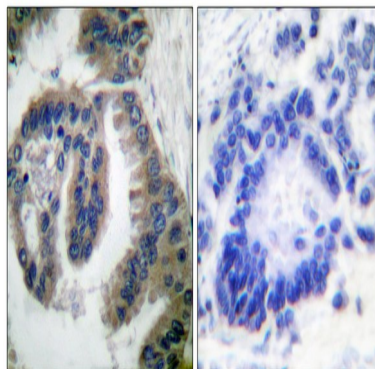
This gene encodes a member of the DnaJ or Hsp40 (heat shock protein 40 kD) family of proteins. DNAJ family members are characterized by a highly conserved amino acid stretch called the 'J-domain' and function as one of the two major classes of molecular chaperones involved in a wide range of cellular events, such as protein folding and oligomeric protein complex assembly. The encoded protein is a molecular chaperone that stimulates the ATPase activity of Hsp70 heat-shock proteins in order to promote protein folding and prevent misfolded protein aggregation. Alternative splicing results in multiple transcript variants. [provided by RefSeq, Sep 2015],function:Interacts with HSP70 and can stimulate its ATPase activity. Stimulates the association between HSC70 and HIP.,induction:By heat shock.,similarity:Contains 1 J domain.,subcellular location:Translocates rapidly from the cytoplasm to the nucleus, and especially to the nucleoli, upon heat shock.,subunit:Interacts with DNAJC3.,

## Research Area

## Image Data



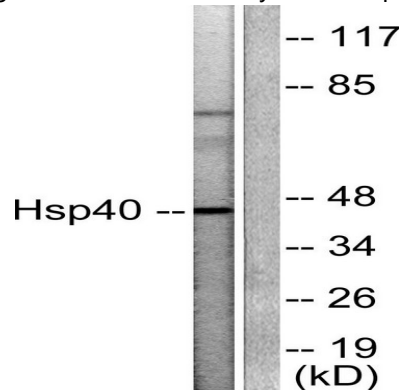
Immunofluorescence analysis of NIH/3T3 cells, using HSP40 Antibody. The picture on the right is blocked with the synthesized peptide.



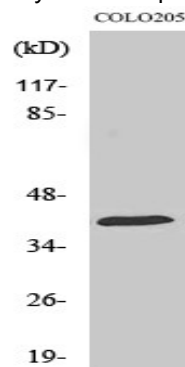
**Product Name: HSP40 Rabbit Polyclonal Antibody**  
**Catalog #: APRab12245**



Immunohistochemistry analysis of paraffin-embedded human lung carcinoma tissue, using HSP40 Antibody. The picture on the right is blocked with the synthesized peptide.



Western blot analysis of lysates from COLO205 cells, using HSP40 Antibody. The lane on the right is blocked with the synthesized peptide.



Western Blot analysis of various cells using HSP40 Polyclonal Antibody

## Note

For research use only.