

Summary

Production Name	HSP20 Rabbit Polyclonal Antibody
Description	Rabbit Polyclonal Antibody
Host	Rabbit
Application	IHC,ELISA
Reactivity	Human,Mouse,Rat

Performance

Conjugation	Unconjugated
Modification	Unmodified
Isotype	IgG
Clonality	Polyclonal
Form	Liquid
Storage	Store at 4°C short term. Aliquot and store at -20°C long term. Avoid freeze/thaw cycles.
Buffer	Liquid in PBS containing 50% glycerol, 0.5% BSA and 0.02% New type preservative N.
Purification	Affinity purification

Immunogen

Gene Name	HSPB6
Alternative Names	HSPB6; Heat shock protein beta-6; HspB6; Heat shock 20 kDa-like protein p20
Gene ID	126393.0
SwissProt ID	O14558.The antiserum was produced against synthesized peptide derived from human HSP20. AA range:5-54

Application

Dilution Ratio	IHC 1:100-1:300 ELISA: 1:5000
Molecular Weight	

Background

This locus encodes a heat shock protein. The encoded protein likely plays a role in smooth muscle relaxation. [provided by

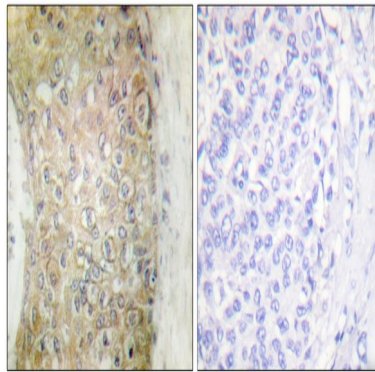
Product Name: HSP20 Rabbit Polyclonal Antibody
Catalog #: APRab12240



RefSeq, Jan 2012],PTM:The N-terminus is blocked.,similarity:Belongs to the small heat shock protein (HSP20) family.,subunit:May exist as disulfide-linked dimer and monomer.,

Research Area

Image Data



Immunohistochemistry analysis of paraffin-embedded human breast carcinoma tissue, using HSP20 Antibody. The picture on the right is blocked with the synthesized peptide.

Note

For research use only.