

## Summary

<b>Production Name</b>	HSP105 Rabbit Polyclonal Antibody
<b>Description</b>	Rabbit Polyclonal Antibody
<b>Host</b>	Rabbit
<b>Application</b>	IF,IHC,WB,
<b>Reactivity</b>	Human,Mouse

## Performance

<b>Conjugation</b>	Unconjugated
<b>Modification</b>	Unmodified
<b>Isotype</b>	IgG
<b>Clonality</b>	Polyclonal
<b>Form</b>	Liquid
<b>Storage</b>	Store at 4°C short term. Aliquot and store at -20°C long term. Avoid freeze/thaw cycles.
<b>Buffer</b>	Liquid in PBS containing 50% glycerol, 0.5% BSA and 0.02% New type preservative N.
<b>Purification</b>	Affinity purification

## Immunogen

<b>Gene Name</b>	HSPH1
<b>Alternative Names</b>	HSPH1; HSP105; HSP110; KIAA0201; Heat shock protein 105 kDa; Antigen NY-CO-25; Heat shock 110 kDa protein
<b>Gene ID</b>	10808.0
<b>SwissProt ID</b>	Q92598.The antiserum was produced against synthesized peptide derived from human HSP105. AA range:791-840

## Application

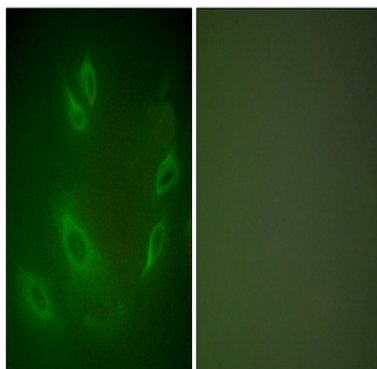
<b>Dilution Ratio</b>	WB 1:500 - 1:2000 IHC 1:100 - 1:300. IF 1:200 - 1:1000. ELISA: 1:10000. Not yet tested in other applications.
<b>Molecular Weight</b>	100kD

## Background

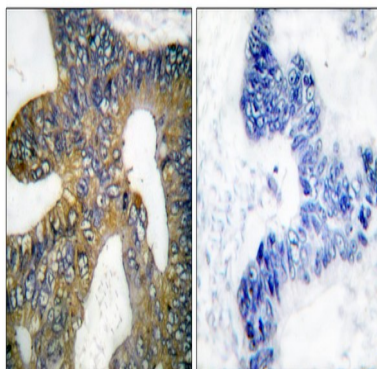
function:Prevents the aggregation of denatured proteins in cells under severe stress, on which the ATP levels decrease markedly. Inhibits HSPA8/HSC70 ATPase and chaperone activities.,PTM:Phosphorylation on Ser-509 may be important for regulation of the HSPA8/HSC70 chaperone activity.,similarity:Belongs to the heat shock protein 70 family.,subunit:Interacts with HSPA8/HSC70.,tissue specificity:Highly expressed in testis. Present at lower levels in most brain regions, except cerebellum. Overexpressed in cancer cells.,function:Prevents the aggregation of denatured proteins in cells under severe stress, on which the ATP levels decrease markedly. Inhibits HSPA8/HSC70 ATPase and chaperone activities.,PTM:Phosphorylation on Ser-509 may be important for regulation of the HSPA8/HSC70 chaperone activity.,similarity:Belongs to the heat shock protein 70 family.,subunit:Interacts with HSPA8/HSC70.,tissue specificity:Highly expressed in testis. Present at lower levels in most brain regions, except cerebellum. Overexpressed in cancer cells.,

## Research Area

## Image Data



Immunofluorescence analysis of HeLa cells, using HSP105 Antibody. The picture on the right is blocked with the synthesized peptide.

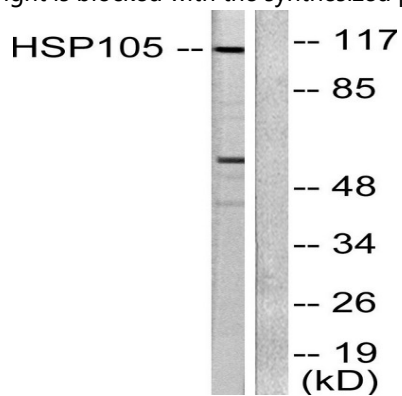


Immunohistochemistry analysis of paraffin-embedded human colon carcinoma tissue, using HSP105 Antibody. The picture

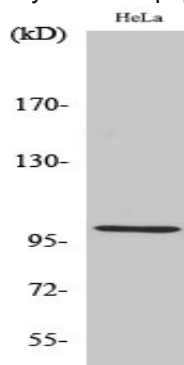
**Product Name: HSP105 Rabbit Polyclonal Antibody**  
**Catalog #: APRab12239**



on the right is blocked with the synthesized peptide.



Western blot analysis of lysates from HeLa cells, using HSP105 Antibody. The lane on the right is blocked with the synthesized peptide.



Western Blot analysis of various cells using HSP105 Polyclonal Antibody

**Note**

For research use only.