

## Summary

<b>Production Name</b>	HSP A9 Rabbit Polyclonal Antibody
<b>Description</b>	Rabbit Polyclonal Antibody
<b>Host</b>	Rabbit
<b>Application</b>	IF,IHC,WB,ELISA
<b>Reactivity</b>	Human,Mouse,Rat,Monkey

## Performance

<b>Conjugation</b>	Unconjugated
<b>Modification</b>	Unmodified
<b>Isotype</b>	IgG
<b>Clonality</b>	Polyclonal
<b>Form</b>	Liquid
<b>Storage</b>	Store at 4°C short term. Aliquot and store at -20°C long term. Avoid freeze/thaw cycles.
<b>Buffer</b>	Liquid in PBS containing 50% glycerol, 0.5% BSA and 0.02% New type preservative N.
<b>Purification</b>	Affinity purification

## Immunogen

<b>Gene Name</b>	HSPA9
<b>Alternative Names</b>	HSPA9; GRP75; HSPA9B; Stress-70 protein; mitochondrial; 75 kDa glucose-regulated protein; GRP-75; Heat shock 70 kDa protein 9; Mortalin; MOT; Peptide-binding protein 74; PBP74
<b>Gene ID</b>	3313.0
<b>SwissProt ID</b>	P38646/Q8N1C8.The antiserum was produced against synthesized peptide derived from human GRP75. AA range:630-679

## Application

<b>Dilution Ratio</b>	WB 1:500 - 1:2000. IHC 1:100 - 1:300. IF 1:200 - 1:1000. ELISA: 1:40000. Not yet tested in other applications.
-----------------------	--

**Product Name: HSP A9 Rabbit Polyclonal Antibody**  
**Catalog #: APRab12234**



---

**Molecular Weight**            75kD

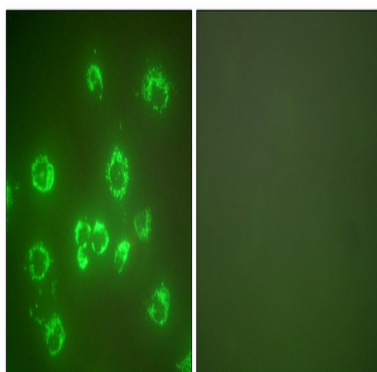
## Background

This gene encodes a member of the heat shock protein 70 gene family. The encoded protein is primarily localized to the mitochondria but is also found in the endoplasmic reticulum, plasma membrane and cytoplasmic vesicles. This protein is a heat-shock cognate protein. This protein plays a role in cell proliferation, stress response and maintenance of the mitochondria. A pseudogene of this gene is found on chromosome 2.[provided by RefSeq, May 2010],function:Implicated in the control of cell proliferation and cellular aging. May also act as a chaperone.,PTM:Phosphorylated upon DNA damage, probably by ATM or ATR.,similarity:Belongs to the heat shock protein 70 family.,subunit:Interacts with FXN.,

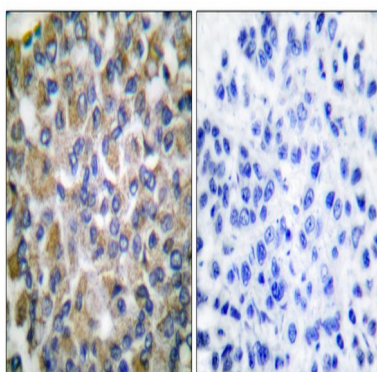
## Research Area

RNA degradation;

## Image Data

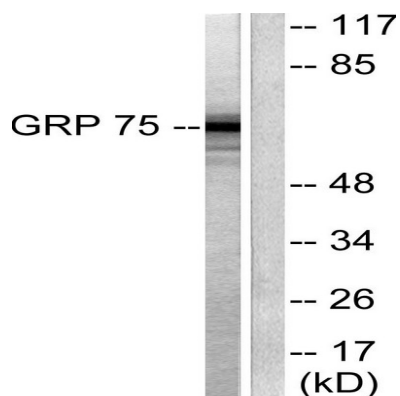


Immunofluorescence analysis of COS7 cells, using GRP75 Antibody. The picture on the right is blocked with the synthesized peptide.

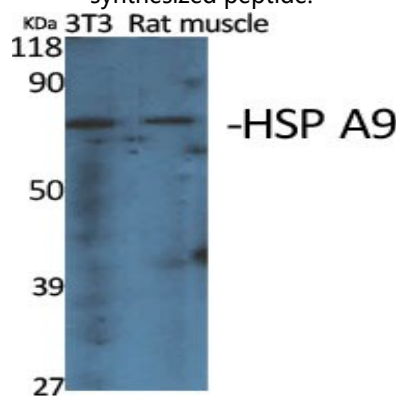


Immunohistochemistry analysis of paraffin-embedded human breast carcinoma tissue, using GRP75 Antibody. The picture on the right is blocked with the synthesized peptide.

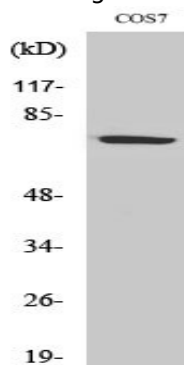
**Product Name: HSP A9 Rabbit Polyclonal Antibody**  
**Catalog #: APRab12234**



Western blot analysis of lysates from COS7 cells, using GRP75 Antibody. The lane on the right is blocked with the synthesized peptide.



Western Blot analysis of various cells using HSP A9 Polyclonal Antibody diluted at 1: 2000



Western Blot analysis of COS7 cells using HSP A9 Polyclonal Antibody diluted at 1: 2000

## Note

For research use only.