
Summary

Production Name	HPK1 Rabbit Polyclonal Antibody
Description	Rabbit Polyclonal Antibody
Host	Rabbit
Application	WB,IHC
Reactivity	Human,Mouse

Performance

Conjugation	Unconjugated
Modification	Unmodified
Isotype	IgG
Clonality	Polyclonal
Form	Liquid
Storage	Store at 4°C short term. Aliquot and store at -20°C long term. Avoid freeze/thaw cycles.
Buffer	Liquid in PBS containing 50% glycerol, 0.5% BSA and 0.02% New type preservative N.
Purification	Affinity purification

Immunogen

Gene Name	MAP4K1 MAP4K1; HPK1; Mitogen-activated protein kinase kinase kinase kinase 1;
Alternative Names	Hematopoietic progenitor kinase; MAPK/ERK kinase kinase kinase 1; MEK kinase kinase 1; MEKKK 1
Gene ID	11184.0
SwissProt ID	Q92918.The antiserum was produced against synthesized peptide derived from human MEKKK 1. AA range:371-420

Application

Dilution Ratio	WB 1:500 - 1:2000. IHC 1:100-200. ELISA: 1:10000.
Molecular Weight	91kD

Product Name: HPK1 Rabbit Polyclonal Antibody
Catalog #: APRab12193



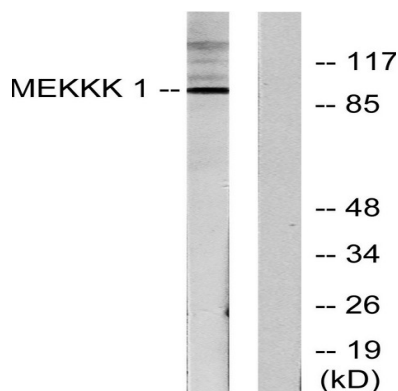
Background

catalytic activity:ATP + a protein = ADP + a phosphoprotein.,cofactor:Magnesium.,function:May play a role in the response to environmental stress. Appears to act upstream of the JUN N-terminal pathway. May play a role in hematopoietic lineage decisions and growth regulation.,similarity:Belongs to the protein kinase superfamily. STE Ser/Thr protein kinase family. STE20 subfamily.,similarity:Contains 1 CNH domain.,similarity:Contains 1 protein kinase domain.,subunit:Interacts with MAP3K1.,tissue specificity:Expressed primarily in hematopoietic organs, including bone marrow, spleen and thymus. Also expressed at very low levels in lung, kidney, mammary glands and small intestine.,catalytic activity:ATP + a protein = ADP + a phosphoprotein.,cofactor:Magnesium.,function:May play a role in the response to environmental stress. Appears to act upstream of the JUN N-terminal pathway. May play a role in hematopoietic lineage decisions and growth regulation.,similarity:Belongs to the protein kinase superfamily. STE Ser/Thr protein kinase family. STE20 subfamily.,similarity:Contains 1 CNH domain.,similarity:Contains 1 protein kinase domain.,subunit:Interacts with MAP3K1.,tissue specificity:Expressed primarily in hematopoietic organs, including bone marrow, spleen and thymus. Also expressed at very low levels in lung, kidney, mammary glands and small intestine.,

Research Area

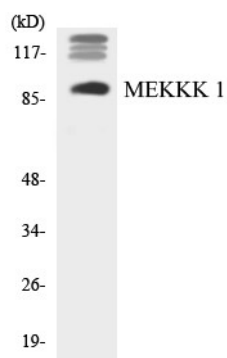
MAPK_ERK_Growth;MAPK_G_Protein;

Image Data



Western blot analysis of lysates from HepG2 cells, using MEK1 Antibody. The lane on the right is blocked with the synthesized peptide.

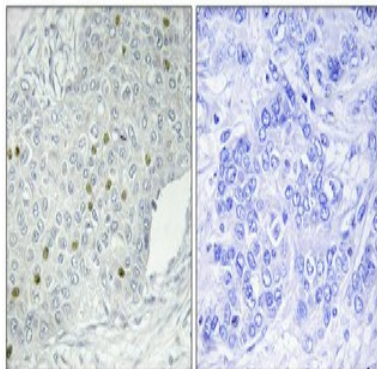
Product Name: HPK1 Rabbit Polyclonal Antibody
Catalog #: APRab12193



Western blot analysis of the lysates from HUVEC cells using MEKKK 1 antibody.



Western Blot analysis of various cells using HPK1 Polyclonal Antibody diluted at 1: 1000



Immunohistochemical analysis of paraffin-embedded Human breast cancer. Antibody was diluted at 1:100 (4°, overnight) . High-pressure and temperature Tris-EDTA, pH 8.0 was used for antigen retrieval. Negative control (right) obtained from antibody was pre-absorbed by immunogen peptide.

Note

For research use only.