

## Summary

<b>Production Name</b>	HoxD8 Rabbit Polyclonal Antibody
<b>Description</b>	Rabbit Polyclonal Antibody
<b>Host</b>	Rabbit
<b>Application</b>	WB
<b>Reactivity</b>	Human,Rat,Mouse

## Performance

<b>Conjugation</b>	Unconjugated
<b>Modification</b>	Unmodified
<b>Isotype</b>	IgG
<b>Clonality</b>	Polyclonal
<b>Form</b>	Liquid
<b>Storage</b>	Store at 4°C short term. Aliquot and store at -20°C long term. Avoid freeze/thaw cycles.
<b>Buffer</b>	Liquid in PBS containing 50% glycerol, 0.5% BSA and 0.02% New type preservative N.
<b>Purification</b>	Affinity purification

## Immunogen

<b>Gene Name</b>	HOXD8
<b>Alternative Names</b>	HOXD8; HOX4E; Homeobox protein Hox-D8; Homeobox protein Hox-4E; Homeobox protein Hox-5.4
<b>Gene ID</b>	3234.0
<b>SwissProt ID</b>	P13378.The antiserum was produced against synthesized peptide derived from human HOXD8. AA range:241-290

## Application

<b>Dilution Ratio</b>	WB 1:500-1:2000. ELISA: 1:40000.
<b>Molecular Weight</b>	32kD

## Background

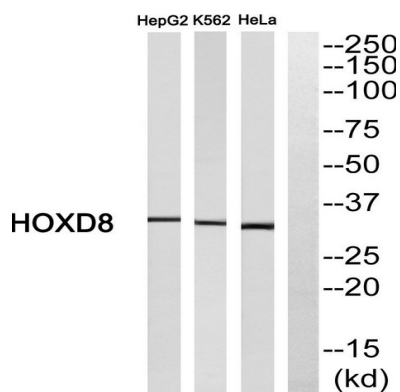
**Product Name: HoxD8 Rabbit Polyclonal Antibody**  
**Catalog #: APRab12180**



This gene belongs to the homeobox family of genes. The homeobox genes encode a highly conserved family of transcription factors that play an important role in morphogenesis in all multicellular organisms. Mammals possess four similar homeobox gene clusters, HOXA, HOXB, HOXC and HOXD, located on different chromosomes, consisting of 9 to 11 genes arranged in tandem. This gene is one of several homeobox HOXD genes located in a cluster on chromosome 2. Deletions that remove the entire HOXD gene cluster or the 5' end of this cluster have been associated with severe limb and genital abnormalities. In addition to effects during embryogenesis, this particular gene may also play a role in adult urogenital tract function. Alternate splicing results in multiple transcript variants.[provided by RefSeq, Dec 2010],function:Sequence-specific transcription factor which is part of a developmental regulatory system that provides cells with specific positional identities on the anterior-posterior axis.,similarity:Belongs to the Antp homeobox family.,similarity:Contains 1 homeobox DNA-binding domain.,

## Research Area

## Image Data



Western blot analysis of HOXD8 Antibody. The lane on the right is blocked with the HOXD8 peptide.

## Note

For research use only.