

## Summary

<b>Production Name</b>	HoxB2 Rabbit Polyclonal Antibody
<b>Description</b>	Rabbit Polyclonal Antibody
<b>Host</b>	Rabbit
<b>Application</b>	WB,ELISA
<b>Reactivity</b>	Human,Rat,Mouse

## Performance

<b>Conjugation</b>	Unconjugated
<b>Modification</b>	Unmodified
<b>Isotype</b>	IgG
<b>Clonality</b>	Polyclonal
<b>Form</b>	Liquid
<b>Storage</b>	Store at 4°C short term. Aliquot and store at -20°C long term. Avoid freeze/thaw cycles.
<b>Buffer</b>	Liquid in PBS containing 50% glycerol, 0.5% BSA and 0.02% New type preservative N.
<b>Purification</b>	Affinity purification

## Immunogen

<b>Gene Name</b>	HOXB2
<b>Alternative Names</b>	HOXB2; HOX2H; Homeobox protein Hox-B2; Homeobox protein Hox-2.8; Homeobox protein Hox-2H; K8
<b>Gene ID</b>	3212.0
<b>SwissProt ID</b>	P14652.The antiserum was produced against synthesized peptide derived from human HOXB2. AA range:41-90

## Application

<b>Dilution Ratio</b>	WB 1:500 - 1:2000. ELISA: 1:20000
<b>Molecular Weight</b>	38kD

**Product Name: HoxB2 Rabbit Polyclonal Antibody**  
**Catalog #: APRab12171**

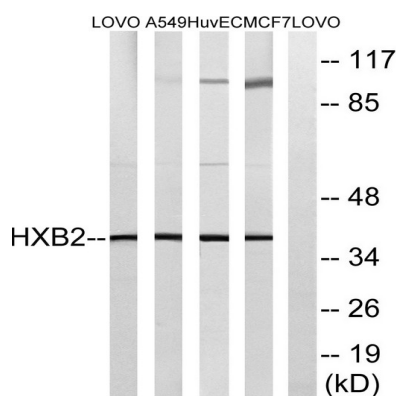


## Background

This gene is a member of the Antp homeobox family and encodes a nuclear protein with a homeobox DNA-binding domain. It is included in a cluster of homeobox B genes located on chromosome 17. The encoded protein functions as a sequence-specific transcription factor that is involved in development. Increased expression of this gene is associated with pancreatic cancer. [provided by RefSeq, Jul 2008],developmental stage:Expressed in whole embryos and fetuses at 5-9 weeks from conception.,function:Sequence-specific transcription factor which is part of a developmental regulatory system that provides cells with specific positional identities on the anterior-posterior axis.,similarity:Belongs to the Antp homeobox family. Proboscipedia subfamily.,similarity:Contains 1 homeobox DNA-binding domain.,

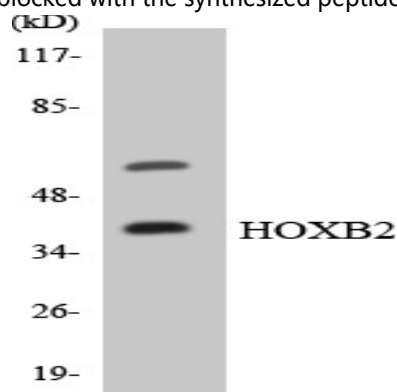
## Research Area

## Image Data



Western blot analysis of lysates from MCF-7, HUVEC, A549, and LOVO cells, using HOXB2 Antibody. The lane on the right is

blocked with the synthesized peptide.



Western blot analysis of the lysates from HUVEC cells using HOXB2 antibody.

## Note

For research use only.

**Product Name: HoxB2 Rabbit Polyclonal Antibody**  
**Catalog #: APRab12171**

---

