

Product Name: hnRNP LL Rabbit Polyclonal Antibody
Catalog #: APRab12150



Summary

Production Name	hnRNP LL Rabbit Polyclonal Antibody
Description	Rabbit Polyclonal Antibody
Host	Rabbit
Application	WB,IHC,ELISA
Reactivity	Human,Mouse,Rat

Performance

Conjugation	Unconjugated
Modification	Unmodified
Isotype	IgG
Clonality	Polyclonal
Form	Liquid
Storage	Store at 4°C short term. Aliquot and store at -20°C long term. Avoid freeze/thaw cycles.
Buffer	Liquid in PBS containing 50% glycerol, 0.5% BSA and 0.02% New type preservative N.
Purification	Affinity purification

Immunogen

Gene Name	HNRPLL
Alternative Names	HNRPLL; SRRF; BLOCK24; Heterogeneous nuclear ribonucleoprotein L-like; hnRNPLL; Stromal RNA-regulating factor
Gene ID	92906.0
SwissProt ID	Q8WVV9.The antiserum was produced against synthesized peptide derived from human HNRPLL. AA range:241-290

Application

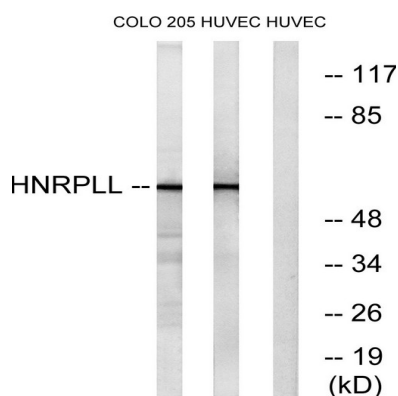
Dilution Ratio	WB 1:500 - 1:2000. IHC 1:100 - 1:300. ELISA: 1:20000..
Molecular Weight	60kD

Background

heterogeneous nuclear ribonucleoprotein L like(HNRNPLL) Homo sapiens HNRNPLL is a master regulator of activation-induced alternative splicing in T cells. In particular, it alters splicing of CD45 (PTPRC; MIM 151460), a tyrosine phosphatase essential for T-cell development and activation (Oberdoerffer et al., 2008 [PubMed 18669861]).[supplied by OMIM, Aug 2008],function:May bind RNA and play a role in mRNA processing.,similarity:Contains 3 RRM (RNA recognition motif) domains.,tissue specificity:Widely expressed. Detected in bone marrow stroma cells, skeletal muscle, heart, placenta, pancreas, kidney and lung.,

Research Area

Image Data

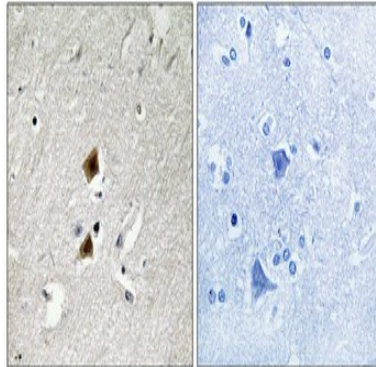


Western blot analysis of lysates from HUVEC and COLO cells, using HNRPLL Antibody. The lane on the right is blocked with the synthesized peptide.



Western Blot analysis of various cells using hnRNP LL Polyclonal Antibody cells nucleus extracted by Minute TM Cytoplasmic and Nuclear Fractionation kit (SC-003, Inventbiotech, MN, USA) .

Product Name: hnRNP LL Rabbit Polyclonal Antibody
Catalog #: APRab12150



Immunohistochemical analysis of paraffin-embedded Human brain. Antibody was diluted at 1:100 (4°,overnight) . High-pressure and temperature Tris-EDTA,pH8.0 was used for antigen retrieval. Negative contrl (right) obtaned from antibody was pre-absorbed by immunogen peptide.

Note

For research use only.