

## Summary

|                        |                                  |
|------------------------|----------------------------------|
| <b>Production Name</b> | HLA-H Rabbit Polyclonal Antibody |
| <b>Description</b>     | Rabbit Polyclonal Antibody       |
| <b>Host</b>            | Rabbit                           |
| <b>Application</b>     | WB,ELISA                         |
| <b>Reactivity</b>      | Human                            |

## Performance

|                     |  |
|---------------------|--|
| <b>Conjugation</b>  | Unconjugated   |
| <b>Modification</b> | Unmodified   |
| <b>Isotype</b>      | IgG  |
| <b>Clonality</b>    | Polyclonal   |
| <b>Form</b>         | Liquid   |
| <b>Storage</b>      | Store at 4°C short term. Aliquot and store at -20°C long term. Avoid freeze/thaw cycles. |
| <b>Buffer</b>       | Liquid in PBS containing 50% glycerol, 0.5% BSA and 0.02% New type preservative N.       |
| <b>Purification</b> | Affinity purification  |

## Immunogen

|                          |  |
|--------------------------|--|
| <b>Gene Name</b>         | HLA-H  |
| <b>Alternative Names</b> | HLA-H; HLAH; Putative HLA class I histocompatibility antigen; alpha chain H; HLA-12.4; HLA-AR; MHC class I antigen H |
| <b>Gene ID</b>           | 3136.0   |
| <b>SwissProt ID</b>      | P01893.The antiserum was produced against synthesized peptide derived from human HLAH. AA range:71-120               |

## Application

|                         |                                   |
|-------------------------|-----------------------------------|
| <b>Dilution Ratio</b>   | WB 1:500 - 1:2000. ELISA: 1:10000 |
| <b>Molecular Weight</b> | 40kD                              |

**Product Name: HLA-H Rabbit Polyclonal Antibody**  
**Catalog #: APRab12091**

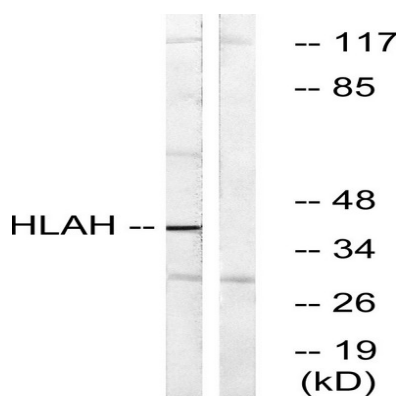


## Background

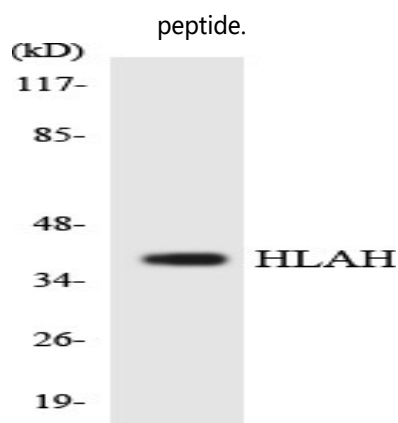
This major histocompatibility complex gene represents a transcribed pseudogene, possibly derived from HLA-A. This gene displays extensive variation. [provided by RefSeq, May 2010],caution:Could be the product of a pseudogene.,function:Involved in the presentation of foreign antigens to the immune system.,similarity:Belongs to the MHC class I family.,similarity:Contains 1 Ig-like C1-type (immunoglobulin-like) domain.,subunit:Heterodimer of an alpha chain and a beta chain (beta-2-microglobulin),

## Research Area

## Image Data



Western blot analysis of lysates from LOVO cells, using HLAH Antibody. The lane on the right is blocked with the synthesized peptide.



Western blot analysis of the lysates from HT-29 cells using HLAH antibody.

## Note

For research use only.