
Summary

Production Name	HLA-DQA1 Rabbit Polyclonal Antibody
Description	Rabbit Polyclonal Antibody
Host	Rabbit
Application	IHC,
Reactivity	Human

Performance

Conjugation	Unconjugated
Modification	Unmodified
Isotype	IgG
Clonality	Polyclonal
Form	Liquid
Storage	Store at 4°C short term. Aliquot and store at -20°C long term. Avoid freeze/thaw cycles.
Buffer	Liquid in PBS containing 50% glycerol, 0.5% BSA and 0.02% New type preservative N.
Purification	Affinity purification

Immunogen

Gene Name	HLA-DQA1
Alternative Names	HLA class II histocompatibility antigen, DQ alpha 1 chain (DC-1 alpha chain;DC-alpha;HLA-DCA;MHC class II DQA1)
Gene ID	100509457.0
SwissProt ID	P01909.The antiserum was produced against synthesized peptide derived from the Internal region of human HLA-DQA1. AA range:21-70

Application

Dilution Ratio	IHC-p 1:50-200, ELISA 1:10000-20000.
Molecular Weight	

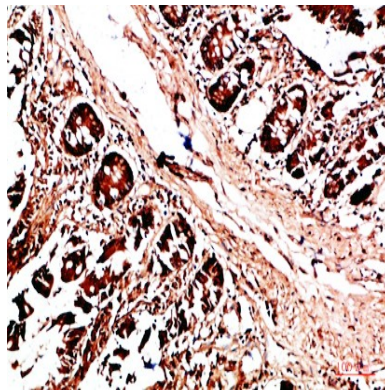
Background

HLA-DQA1 belongs to the HLA class II alpha chain paralogues. The class II molecule is a heterodimer consisting of an alpha (DQA) and a beta chain (DQB), both anchored in the membrane. It plays a central role in the immune system by presenting peptides derived from extracellular proteins. Class II molecules are expressed in antigen presenting cells (APC: B Lymphocytes, dendritic cells, macrophages). The alpha chain is approximately 33-35 kDa. It is encoded by 5 exons; exon 1 encodes the leader peptide, exons 2 and 3 encode the two extracellular domains, and exon 4 encodes the transmembrane domain and the cytoplasmic tail. Within the DQ molecule both the alpha chain and the beta chain contain the polymorphisms specifying the peptide binding specificities, resulting in up to four different molecules. Typing for these polymorphisms is routinely done for bone marrow transplantation. Belongs to the MHC class II family, similarity: Contains 1 Ig-like C1-type (immunoglobulin-like) domain.,

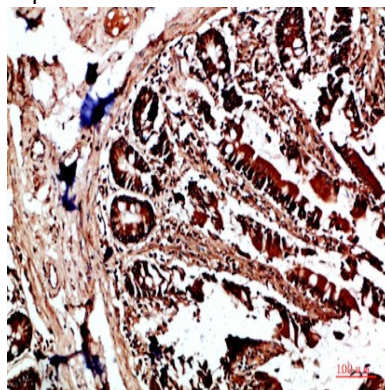
Research Area

Cell adhesion molecules (CAMs); Antigen processing and presentation; Intestinal immune network for IgA production; Type I diabetes mellitus; Asthma; Autoimmune thyroid disease; Systemic lupus erythematosus; Allograft rejection; Graft-versus-host disease; Viral myocarditis;

Image Data

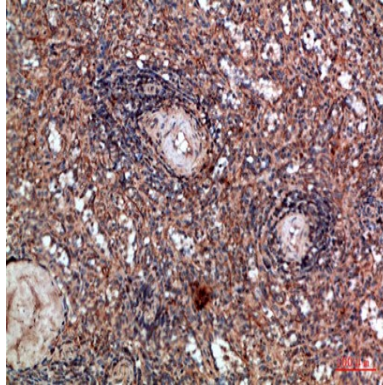


Immunohistochemical analysis of paraffin-embedded human-colon, antibody was diluted at 1:200

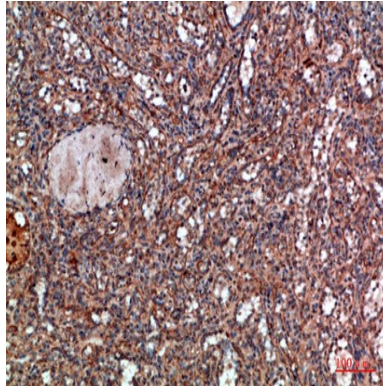


Immunohistochemical analysis of paraffin-embedded human-colon, antibody was diluted at 1:200

Product Name: HLA-DQA1 Rabbit Polyclonal Antibody
Catalog #: APRab12085



Immunohistochemical analysis of paraffin-embedded human-spleen, antibody was diluted at 1:200



Immunohistochemical analysis of paraffin-embedded human-spleen, antibody was diluted at 1:200

Note

For research use only.