

---

## Summary

<b>Production Name</b>	HLA-DO $\beta$ Rabbit Polyclonal Antibody
<b>Description</b>	Rabbit Polyclonal Antibody
<b>Host</b>	Rabbit
<b>Application</b>	WB,ELISA
<b>Reactivity</b>	Human

## Performance

<b>Conjugation</b>	Unconjugated
<b>Modification</b>	Unmodified
<b>Isotype</b>	IgG
<b>Clonality</b>	Polyclonal
<b>Form</b>	Liquid
<b>Storage</b>	Store at 4°C short term. Aliquot and store at -20°C long term. Avoid freeze/thaw cycles.
<b>Buffer</b>	Liquid in PBS containing 50% glycerol, 0.5% BSA and 0.02% New type preservative N.
<b>Purification</b>	Affinity purification

## Immunogen

<b>Gene Name</b>	HLA-DOB
<b>Alternative Names</b>	HLA-DOB; HLA class II histocompatibility antigen; DO beta chain; MHC class II antigen DOB
<b>Gene ID</b>	3112.0
<b>SwissProt ID</b>	P13765.The antiserum was produced against synthesized peptide derived from human HLA-DOB. AA range:1-50

## Application

<b>Dilution Ratio</b>	WB 1:500 - 1:2000. ELISA: 1:40000. Not yet tested in other applications.
<b>Molecular Weight</b>	30kD

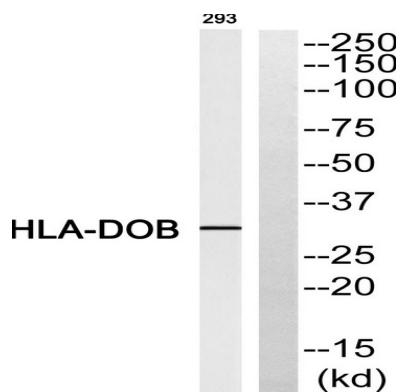
## Background

HLA-DOB belongs to the HLA class II beta chain paralogues. This class II molecule is a heterodimer consisting of an alpha (DOA) and a beta chain (DOB), both anchored in the membrane. It is located in intracellular vesicles. DO suppresses peptide loading of MHC class II molecules by inhibiting HLA-DM. Class II molecules are expressed in antigen presenting cells (APC: B lymphocytes, dendritic cells, macrophages). The beta chain is approximately 26-28 kDa and its gene contains 6 exons. Exon one encodes the leader peptide, exons 2 and 3 encode the two extracellular domains, exon 4 encodes the transmembrane domain and exon 5 encodes the cytoplasmic tail. [provided by RefSeq, Jul 2008],function:Important modulator in the HLA class II restricted antigen presentation pathway by interaction with the HLA-DM molecule.,polymorphism:The following alleles of DOB are known: DOB\*0101, DOB\*0102, DOB\*0103 and DOB\*0104. The sequence shown is that of DOB\*0101.,similarity:Belongs to the MHC class II family.,similarity:Contains 1 Ig-like C1-type (immunoglobulin-like) domain.,subunit:Heterodimer of an alpha chain (DOA) and a beta chain (DOB),.

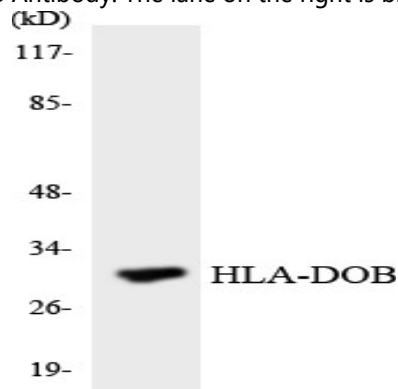
## Research Area

Cell adhesion molecules (CAMs);Antigen processing and presentation;Intestinal immune network for IgA production;Type I diabetes mellitus;Asthma;Autoimmune thyroid disease;Systemic lupus erythematosus;Allograft rejection;Graft-versus-host disease;Viral myocarditis;

## Image Data



Western blot analysis of HLA-DOB Antibody. The lane on the right is blocked with the HLA-DOB peptide.



**Product Name: HLA-DO $\beta$  Rabbit Polyclonal Antibody**  
**Catalog #: APRab12082**



Western blot analysis of the lysates from HeLa cells using HLA-DO $\beta$  antibody.



Western Blot analysis of various cells using HLA-DO $\beta$  Polyclonal Antibody diluted at 1: 1000

**Note**

For research use only.