

Product Name: HisRS Rabbit Polyclonal Antibody
Catalog #: APRab12040



Summary

Production Name	HisRS Rabbit Polyclonal Antibody
Description	Rabbit Polyclonal Antibody
Host	Rabbit
Application	IF, WB, ELISA
Reactivity	Human, Mouse

Performance

Conjugation	Unconjugated
Modification	Unmodified
Isotype	IgG
Clonality	Polyclonal
Form	Liquid
Storage	Store at 4°C short term. Aliquot and store at -20°C long term. Avoid freeze/thaw cycles.
Buffer	Liquid in PBS containing 50% glycerol, 0.5% BSA and 0.02% New type preservative N.
Purification	Affinity purification

Immunogen

Gene Name	HARS
Alternative Names	HARS; HRS; Histidine--tRNA ligase; cytoplasmic; Histidyl-tRNA synthetase; HisRS
Gene ID	3035.0
SwissProt ID	P12081. The antiserum was produced against synthesized peptide derived from human HARS. AA range: 460-509

Application

Dilution Ratio	WB 1:500 - 1:2000. IF 1:200 - 1:1000. ELISA: 1:20000. Not yet tested in other applications.
Molecular Weight	60kD

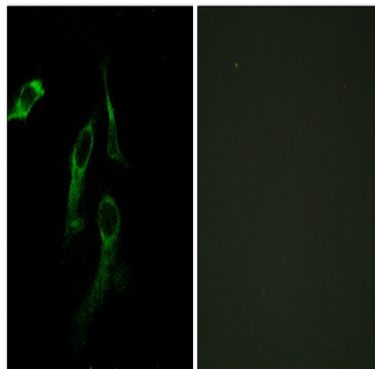
Background

Aminoacyl-tRNA synthetases are a class of enzymes that charge tRNAs with their cognate amino acids. The protein encoded by this gene is a cytoplasmic enzyme which belongs to the class II family of aminoacyl-tRNA synthetases. The enzyme is responsible for the synthesis of histidyl-transfer RNA, which is essential for the incorporation of histidine into proteins. The gene is located in a head-to-head orientation with HARS1 on chromosome five, where the homologous genes share a bidirectional promoter. The gene product is a frequent target of autoantibodies in the human autoimmune disease polymyositis/dermatomyositis. Several transcript variants encoding different isoforms have been found for this gene. [provided by RefSeq, Apr 2012], catalytic activity: ATP + L-histidine + tRNA(His) = AMP + diphosphate + L-histidyl-tRNA(His), similarity: Belongs to the class-II aminoacyl-tRNA synthetase family, similarity: Contains 1 WHEP-TRS domain, tissue specificity: Brain, heart, liver and kidney.,

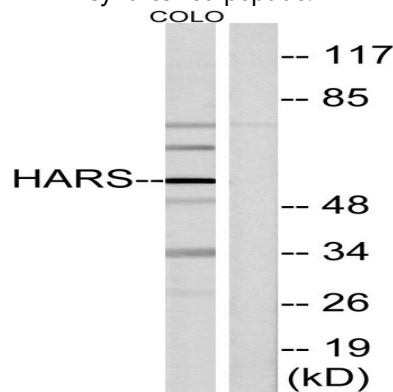
Research Area

Aminoacyl-tRNA biosynthesis;

Image Data

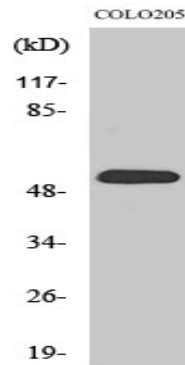


Immunofluorescence analysis of HepG2 and HeLa cells, using HARS Antibody. The picture on the right is blocked with the synthesized peptide.



Western blot analysis of lysates from COLO cells, using HARS Antibody. The lane on the right is blocked with the synthesized peptide.

Product Name: HisRS Rabbit Polyclonal Antibody
Catalog #: APRab12040



Western Blot analysis of various cells using HisRS Polyclonal Antibody diluted at 1 : 2000

Note

For research use only.