

## Summary

<b>Production Name</b>	Hint1 Rabbit Polyclonal Antibody
<b>Description</b>	Rabbit Polyclonal Antibody
<b>Host</b>	Rabbit
<b>Application</b>	IF, WB, IHC
<b>Reactivity</b>	Human, Mouse, Rat

## Performance

<b>Conjugation</b>	Unconjugated
<b>Modification</b>	Unmodified
<b>Isotype</b>	IgG
<b>Clonality</b>	Polyclonal
<b>Form</b>	Liquid
<b>Storage</b>	Store at 4°C short term. Aliquot and store at -20°C long term. Avoid freeze/thaw cycles.
<b>Buffer</b>	Liquid in PBS containing 50% glycerol, 0.5% BSA and 0.02% New type preservative N.
<b>Purification</b>	Affinity purification

## Immunogen

<b>Gene Name</b>	HINT1
<b>Alternative Names</b>	HINT1; HINT; PKCI1; PRKCNH1; Histidine triad nucleotide-binding protein 1; Adenosine 5'-monophosphoramidase; Protein kinase C inhibitor 1; Protein kinase C-interacting protein 1; PKCI-1
<b>Gene ID</b>	3094.0
<b>SwissProt ID</b>	P49773. The antiserum was produced against synthesized peptide derived from human HINT1. AA range: 71-120

## Application

<b>Dilution Ratio</b>	WB 1:500 - 1:2000. IHC 1:100 - 1:300. IF 1:200 - 1:1000. ELISA: 1:20000. Not yet tested in other applications.
-----------------------	--

**Product Name: Hint1 Rabbit Polyclonal Antibody**  
**Catalog #: APRab12029**



---

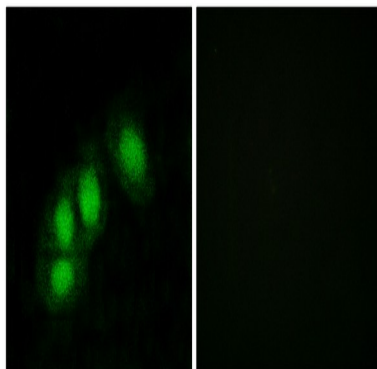
**Molecular Weight**                      28kD

## Background

This gene encodes a protein that hydrolyzes purine nucleotide phosphoramidates substrates, including AMP-morpholidate, AMP-N-alanine methyl ester, AMP-alpha-acetyl lysine methyl ester, and AMP-NH<sub>2</sub>. The encoded protein interacts with these substrates via a histidine triad motif. This gene is considered a tumor suppressor gene. In addition, mutations in this gene can cause autosomal recessive neuromyotonia and axonal neuropathy. There are several related pseudogenes on chromosome 7. Several transcript variants have been observed. [provided by RefSeq, Dec 2015], caution: Was originally thought to be a protein kinase C inhibitor and to bind zinc in solution. Both seem to be incorrect., domain: The histidine triad, also called HIT motif, forms part of the binding loop for the alpha-phosphate of purine mononucleotide., function: Hydrolyzes adenosine 5'-monophosphoramidate substrates such as AMP-morpholidate, AMP-N-alanine methyl ester, AMP-alpha-acetyl lysine methyl ester and AMP-NH<sub>2</sub>., similarity: Belongs to the HINT family., similarity: Contains 1 HIT domain., subcellular location: Interaction with CDK7 leads to a more nuclear localization., subunit: Homodimer. Interacts with CDK7., tissue specificity: Widely expressed.,

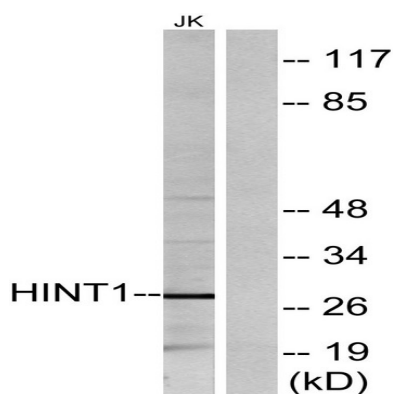
## Research Area

## Image Data

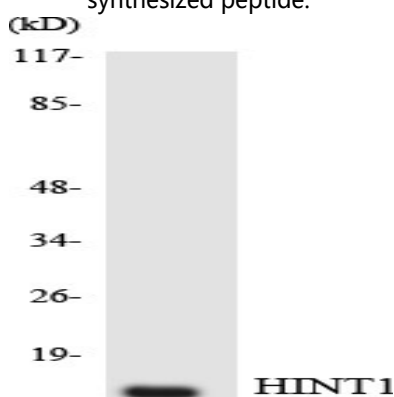


Immunofluorescence analysis of HeLa cells, using HINT1 Antibody. The picture on the right is blocked with the synthesized peptide.

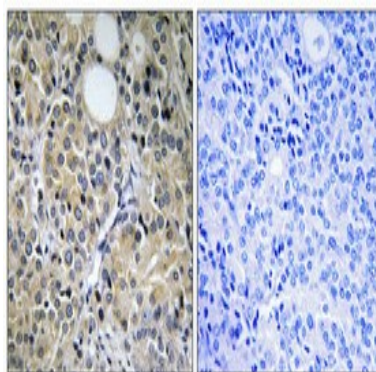
**Product Name: Hint1 Rabbit Polyclonal Antibody**  
**Catalog #: APRab12029**



Western blot analysis of lysates from Jurkat cells, using HINT1 Antibody. The lane on the right is blocked with the synthesized peptide.



Western blot analysis of the lysates from HepG2 cells using HINT1 antibody.



Immunohistochemical analysis of paraffin-embedded Human prostate cancer. Antibody was diluted at 1:100 (4°, overnight) . High-pressure and temperature Tris-EDTA, pH8.0 was used for antigen retrieval. Negative control (right) obtained from antibody was pre-absorbed by immunogen peptide.

## Note

For research use only.