

## Summary

|                        |                                  |
|------------------------|----------------------------------|
| <b>Production Name</b> | HES-6 Rabbit Polyclonal Antibody |
| <b>Description</b>     | Rabbit Polyclonal Antibody       |
| <b>Host</b>            | Rabbit                           |
| <b>Application</b>     | WB,ELISA                         |
| <b>Reactivity</b>      | Human,Rat,Mouse                  |

## Performance

|                     |  |
|---------------------|--|
| <b>Conjugation</b>  | Unconjugated   |
| <b>Modification</b> | Unmodified   |
| <b>Isotype</b>      | IgG  |
| <b>Clonality</b>    | Polyclonal   |
| <b>Form</b>         | Liquid   |
| <b>Storage</b>      | Store at 4°C short term. Aliquot and store at -20°C long term. Avoid freeze/thaw cycles. |
| <b>Buffer</b>       | Liquid in PBS containing 50% glycerol, 0.5% BSA and 0.02% New type preservative N.       |
| <b>Purification</b> | Affinity purification  |

## Immunogen

|                          |  |
|--------------------------|--|
| <b>Gene Name</b>         | HES6   |
| <b>Alternative Names</b> | HES6; BHLHB41; Transcription cofactor HES-6; C-HAIRY1; Class B basic helix-loop-helix protein 41; bHLHb41; Hairy and enhancer of split 6 |
| <b>Gene ID</b>           | 55502.0  |
| <b>SwissProt ID</b>      | Q96HZ4.The antiserum was produced against synthesized peptide derived from human HES6. AA range:1-50                                     |

## Application

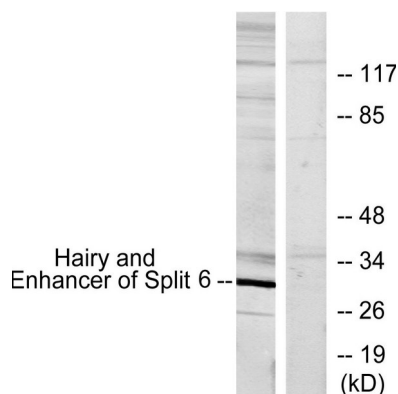
|                         |                                     |
|-------------------------|-------------------------------------|
| <b>Dilution Ratio</b>   | WB 1:500 - 1:2000. ELISA: 1:10000.. |
| <b>Molecular Weight</b> | 30kD                                |

## Background

This gene encodes a member of a subfamily of basic helix-loop-helix transcription repressors that have homology to the Drosophila enhancer of split genes. Members of this gene family regulate cell differentiation in numerous cell types. The protein encoded by this gene functions as a cofactor, interacting with other transcription factors through a tetrapeptide domain in its C-terminus. Alternatively spliced transcript variants encoding different isoforms have been described. [provided by RefSeq, Dec 2008],domain:Has a particular type of basic domain (presence of a helix-interrupting proline) that binds to the N-box (CACNAG), rather than the canonical E-box (CANNTG),.domain:The C-terminal WRPW motif is a transcriptional repression domain necessary for the interaction with Groucho/TLE family members, transcriptional corepressors recruited to specific target DNA by Hairy-related proteins,.function:Does not bind DNA itself but suppresses both HES1-mediated N box-dependent transcriptional repression and binding of HES1 to E box sequences. Also suppresses HES1-mediated inhibition of the heterodimer formed by ASCL1/MASH1 and TCF3/E47, allowing ASCL1 and TCF3 to up-regulate transcription in its presence. Promotes cell differentiation,.similarity:Contains 1 basic helix-loop-helix (bHLH) domain,.similarity:Contains 1 Orange domain,.subunit:Transcription repression requires formation of a complex with a corepressor protein of the Groucho/TLE family. Interacts with HES1.,

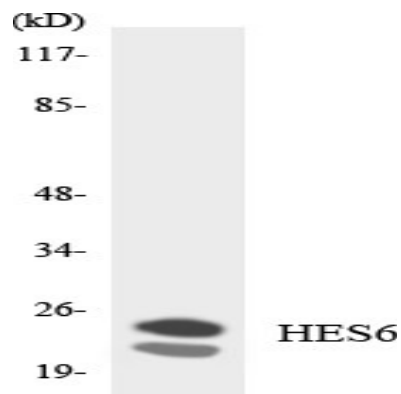
## Research Area

## Image Data



Western blot analysis of lysates from HeLa cells, using HES6 Antibody. The lane on the right is blocked with the synthesized peptide.

**Product Name: HES-6 Rabbit Polyclonal Antibody**  
**Catalog #: APRab11995**



Western blot analysis of the lysates from 293 cells using HES6 antibody.



Western Blot analysis of various cells using HES-6 Polyclonal Antibody diluted at 1: 1000 cells nucleus extracted by Minute  
TM Cytoplasmic and Nuclear Fractionation kit (SC-003, Inventbiotech, MN, USA) .

## **Note**

For research use only.