

Product Name: Hepatic Lipase Rabbit Polyclonal Antibody
Catalog #: APRab11983

Summary

Production Name	Hepatic Lipase Rabbit Polyclonal Antibody
Description	Rabbit Polyclonal Antibody
Host	Rabbit
Application	WB,IHC,
Reactivity	Human,Rat,Mouse

Performance

Conjugation	Unconjugated
Modification	Unmodified
Isotype	IgG
Clonality	Polyclonal
Form	Liquid
Storage	Store at 4°C short term. Aliquot and store at -20°C long term. Avoid freeze/thaw cycles.
Buffer	Liquid in PBS containing 50% glycerol, 0.5% BSA and 0.02% New type preservative N.
Purification	Affinity purification

Immunogen

Gene Name	LIPC
Alternative Names	LIPC; HTGL; Hepatic triacylglycerol lipase; HL; Hepatic lipase; Lipase member C
Gene ID	3990.0
SwissProt ID	P11150.The antiserum was produced against synthesized peptide derived from human LIPC. AA range:301-350

Application

Dilution Ratio	WB 1:500 - 1:2000. IHC 1:100 - 1:300. ELISA: 1:10000..
Molecular Weight	56kD

Product Name: Hepatic Lipase Rabbit Polyclonal Antibody
Catalog #: APRab11983

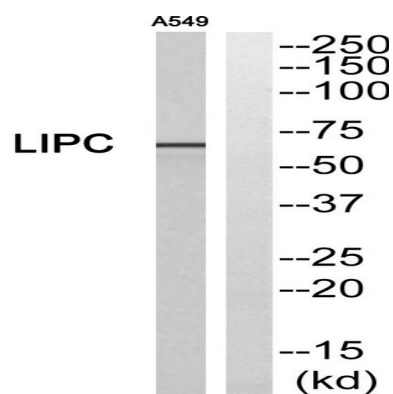
Background

LIPC encodes hepatic triglyceride lipase, which is expressed in liver. LIPC has the dual functions of triglyceride hydrolase and ligand/bridging factor for receptor-mediated lipoprotein uptake. [provided by RefSeq, Jul 2008], catalytic activity: Triacylglycerol + H₂O = diacylglycerol + a carboxylate., disease: Defects in LIPC are the cause of hepatic lipase deficiency (HL deficiency) [MIM:151670], function: Hepatic lipase has the capacity to catalyze hydrolysis of phospholipids, mono-, di-, and triglycerides, and acyl-CoA thioesters. It is an important enzyme in HDL metabolism. Hepatic lipase binds heparin., online information: The Singapore human mutation and polymorphism database, similarity: Belongs to the AB hydrolase superfamily. Lipase family., similarity: Contains 1 PLAT domain.,

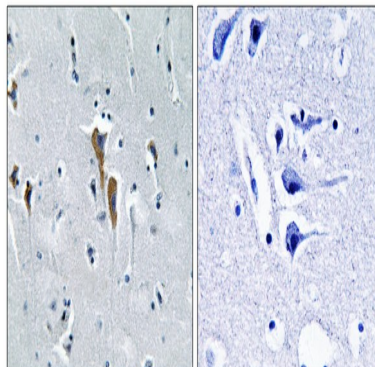
Research Area

Glycerolipid metabolism;

Image Data

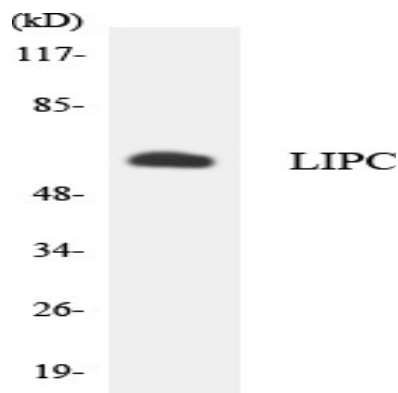


Western blot analysis of LIPC Antibody. The lane on the right is blocked with the LIPC peptide.

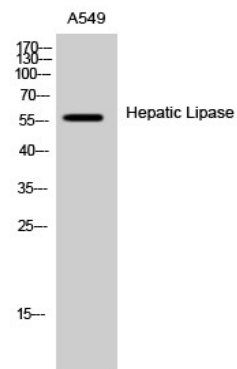


Immunohistochemistry analysis of paraffin-embedded human brain, using LIPC Antibody. The lane on the right is blocked with the LIPC peptide.

Product Name: Hepatic Lipase Rabbit Polyclonal Antibody
Catalog #: APRab11983



Western blot analysis of the lysates from HT-29 cells using LIPC antibody.



Western Blot analysis of A549 cells using Hepatic Lipase Polyclonal Antibody

Note

For research use only.