

Product Name: HEN2 Rabbit Polyclonal Antibody
Catalog #: APRab11980



Summary

Production Name	HEN2 Rabbit Polyclonal Antibody
Description	Rabbit Polyclonal Antibody
Host	Rabbit
Application	WB
Reactivity	Human,Mouse

Performance

Conjugation	Unconjugated
Modification	Unmodified
Isotype	IgG
Clonality	Polyclonal
Form	Liquid
Storage	Store at 4°C short term. Aliquot and store at -20°C long term. Avoid freeze/thaw cycles.
Buffer	Liquid in PBS containing 50% glycerol, and 0.02% New type preservative N.
Purification	Affinity purification

Immunogen

Gene Name	NHLH2 BHLHA34 HEN2 KIAA0490
Alternative Names	
Gene ID	4808.0
SwissProt ID	Q02577.Synthesized peptide derived from human protein . at AA range: 30-110

Application

Dilution Ratio	WB 1:500-2000 ELISA 1:5000-20000
Molecular Weight	14kD

Background

function:May serve as DNA-binding protein and may be involved in the control of cell-type determination, possibly within the developing nervous system.,similarity:Contains 1 basic helix-loop-helix (bHLH) domain.,subunit:Efficient DNA binding

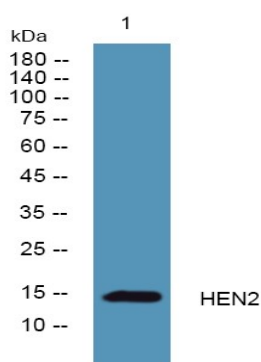
Product Name: HEN2 Rabbit Polyclonal Antibody
Catalog #: APRab11980



requires dimerization with another bHLH protein.,function:May serve as DNA-binding protein and may be involved in the control of cell-type determination, possibly within the developing nervous system.,similarity:Contains 1 basic helix-loop-helix (bHLH) domain.,subunit:Efficient DNA binding requires dimerization with another bHLH protein.,

Research Area

Image Data



Western blot analysis of lysates from K562 cells, primary antibody was diluted at 1:1000, 4° over night

Note

For research use only.