

## Summary

<b>Production Name</b>	HEN1/2 Rabbit Polyclonal Antibody
<b>Description</b>	Rabbit Polyclonal Antibody
<b>Host</b>	Rabbit
<b>Application</b>	WB,ELISA
<b>Reactivity</b>	Human,Mouse

## Performance

<b>Conjugation</b>	Unconjugated
<b>Modification</b>	Unmodified
<b>Isotype</b>	IgG
<b>Clonality</b>	Polyclonal
<b>Form</b>	Liquid
<b>Storage</b>	Store at 4°C short term. Aliquot and store at -20°C long term. Avoid freeze/thaw cycles.
<b>Buffer</b>	Liquid in PBS containing 50% glycerol, 0.5% BSA and 0.02% New type preservative N.
<b>Purification</b>	Affinity purification

## Immunogen

<b>Gene Name</b>	HEN1/HEN2
<b>Alternative Names</b>	NHLH1; BHLHA35; HEN1; Helix-loop-helix protein 1; HEN-1; Class A basic helix-loop-helix protein 35; bHLHa35; Nescient helix loop helix 1; NSCL-1; NHLH2; BHLHA34; HEN2; KIAA0490; Helix-loop-helix protein 2; HEN-2; Class A basic helix-loop-he
<b>Gene ID</b>	4807/4808
<b>SwissProt ID</b>	Q02575/Q02577.The antiserum was produced against synthesized peptide derived from human HEN1/2. AA range:41-90

## Application

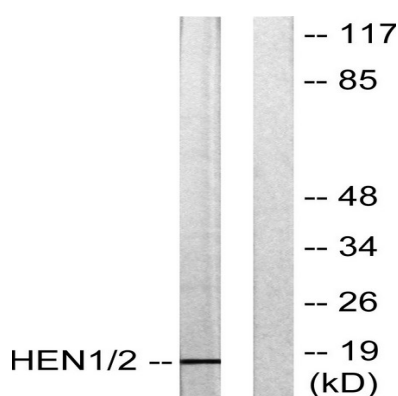
<b>Dilution Ratio</b>	WB 1:500 - 1:2000. ELISA: 1:10000
<b>Molecular Weight</b>	19kD

## Background

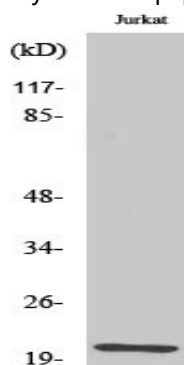
The helix-loop-helix (HLH) proteins are a family of putative transcription factors, some of which have been shown to play an important role in growth and development of a wide variety of tissues and species. Four members of this family have been clearly implicated in tumorigenesis via their involvement in chromosomal translocations in lymphoid tumors: MYC (MIM 190080), LYL1 (MIM 151440), E2A (MIM 147141), and SCL (MIM 187040).[supplied by OMIM, Nov 2002],function:May serve as DNA-binding protein and may be involved in the control of cell-type determination, possibly within the developing nervous system.,similarity:Contains 1 basic helix-loop-helix (bHLH) domain.,subunit:Efficient DNA binding requires dimerization with another bHLH protein.,

## Research Area

## Image Data



Western blot analysis of lysates from Jurkat cells, using HEN1/2 Antibody. The lane on the right is blocked with the synthesized peptide.



Western Blot analysis of various cells using HEN1/2 Polyclonal Antibody diluted at 1: 1000 cells nucleus extracted by Minute TM Cytoplasmic and Nuclear Fractionation kit (SC-003, Inventbiotech, MN, USA) .

**Product Name: HEN1/2 Rabbit Polyclonal Antibody**  
**Catalog #: APRab11979**

---



**Note**

For research use only.