
Summary

Production Name	Gα t1 Rabbit Polyclonal Antibody
Description	Rabbit Polyclonal Antibody
Host	Rabbit
Application	WB,ELISA
Reactivity	Human,Mouse,Rat

Performance

Conjugation	Unconjugated
Modification	Unmodified
Isotype	IgG
Clonality	Polyclonal
Form	Liquid
Storage	Store at 4°C short term. Aliquot and store at -20°C long term. Avoid freeze/thaw cycles.
Buffer	Liquid in PBS containing 50% glycerol, 0.5% BSA and 0.02% New type preservative N.
Purification	Affinity purification

Immunogen

Gene Name	GNAT1
Alternative Names	GNAT1; GNATR; Guanine nucleotide-binding protein G(t) subunit alpha-1; Transducin alpha-1 chain
Gene ID	2779.0
SwissProt ID	P11488.The antiserum was produced against synthesized peptide derived from human GNAT1. AA range:71-120

Application

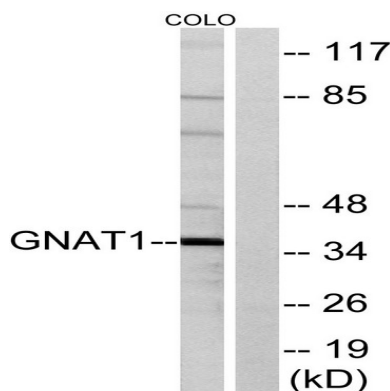
Dilution Ratio	WB 1:500 - 1:2000. ELISA: 1:40000.
Molecular Weight	36kD

Background

Transducin is a 3-subunit guanine nucleotide-binding protein (G protein) which stimulates the coupling of rhodopsin and cGMP-phosphodiesterase during visual impulses. The transducin alpha subunits in rods and cones are encoded by separate genes. This gene encodes the alpha subunit in rods. This gene is also expressed in other cells, and has been implicated in bitter taste transduction in rat taste cells. Mutations in this gene result in autosomal dominant congenital stationary night blindness. Multiple alternatively spliced variants, encoding the same protein, have been identified. [provided by RefSeq, Feb 2009],disease:Defects in GNAT1 are the cause of congenital stationary night blindness autosomal dominant type 3 (CSNBAD3) [MIM:610444]; also known as congenital stationary night blindness Nougaret type. Congenital stationary night blindness is a non-progressive retinal disorder characterized by impaired night vision.,function:Guanine nucleotide-binding proteins (G proteins) are involved as modulators or transducers in various transmembrane signaling systems. Transducin is an amplifier and one of the transducers of a visual impulse that performs the coupling between rhodopsin and cGMP-phosphodiesterase.,online information:Retina International's Scientific Newsletter,similarity:Belongs to the G-alpha family. G(i/o/t/z) subfamily.,subunit:G proteins are composed of 3 units; alpha, beta and gamma. The alpha chain contains the guanine nucleotide binding site.,tissue specificity:Rod.,

Research Area

Image Data



Western blot analysis of lysates from COLO cells, using GNAT1 Antibody. The lane on the right is blocked with the synthesized peptide.

Product Name: Gα t1 Rabbit Polyclonal Antibody
Catalog #: APRab11866



Western Blot analysis of various cells using Gα t1 Polyclonal Antibody diluted at 1 : 2000

Note

For research use only.