

## Summary

<b>Production Name</b>	Gα olf Rabbit Polyclonal Antibody
<b>Description</b>	Rabbit Polyclonal Antibody
<b>Host</b>	Rabbit
<b>Application</b>	IHC, WB,
<b>Reactivity</b>	Human, Mouse, Rat

## Performance

<b>Conjugation</b>	Unconjugated
<b>Modification</b>	Unmodified
<b>Isotype</b>	IgG
<b>Clonality</b>	Polyclonal
<b>Form</b>	Liquid
<b>Storage</b>	Store at 4°C short term. Aliquot and store at -20°C long term. Avoid freeze/thaw cycles.
<b>Buffer</b>	Liquid in PBS containing 50% glycerol, 0.5% BSA and 0.02% New type preservative N.
<b>Purification</b>	Affinity purification

## Immunogen

<b>Gene Name</b>	GNAL
<b>Alternative Names</b>	GNAL; Guanine nucleotide-binding protein G(olf) subunit alpha; Adenylate cyclase-stimulating G alpha protein; olfactory type
<b>Gene ID</b>	2774.0
<b>SwissProt ID</b>	P38405. The antiserum was produced against synthesized peptide derived from human GNAL. AA range:41-90

## Application

<b>Dilution Ratio</b>	WB 1:500 - 1:2000. IHC 1:100 - 1:300. ELISA: 1:20000..
<b>Molecular Weight</b>	40kD

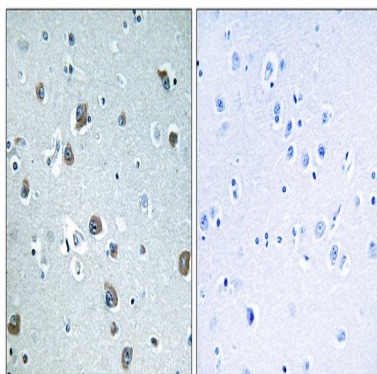
## Background

G protein subunit alpha L(GNAL) Homo sapiens This gene encodes a stimulatory G protein alpha subunit which mediates odorant signaling in the olfactory epithelium. This protein couples dopamine type 1 receptors and adenosine A2A receptors and is widely expressed in the central nervous system. Mutations in this gene have been associated with dystonia 25 and this gene is located in a susceptibility region for bipolar disorder and schizophrenia. Alternative splicing results in multiple transcript variants. [provided by RefSeq, Dec 2013],function:Guanine nucleotide-binding proteins (G proteins) are involved as modulators or transducers in various transmembrane signaling systems. G(olf) alpha mediates signal transduction within the olfactory neuroepithelium and the basal ganglia. May be involved in some aspect of visual transduction, and in mediating the effect of one or more hormones/neurotransmitters.,similarity:Belongs to the G-alpha family. G(s) subfamily.,subunit:G proteins are composed of 3 units; alpha, beta and gamma. The alpha chain contains the guanine nucleotide binding site.,tissue specificity:Detected in olfactory neuroepithelium, brain, testis, and to a lower extent in retina, lung alveoli, spleen. Trace amounts where seen in kidney, adrenal gland and liver. Found to be expressed in all the insulinomas examined.,

## Research Area

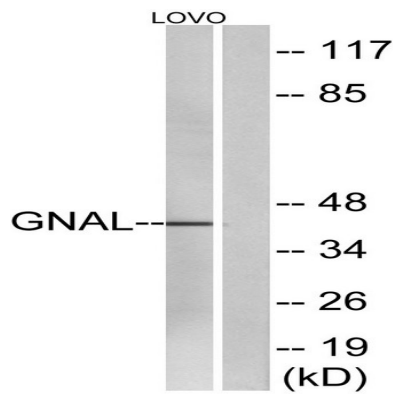
Calcium;Olfactory transduction;

## Image Data

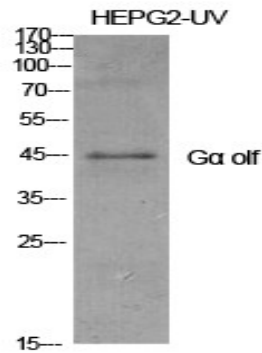


Immunohistochemistry analysis of paraffin-embedded human brain tissue, using GNAL Antibody. The picture on the right is blocked with the synthesized peptide.

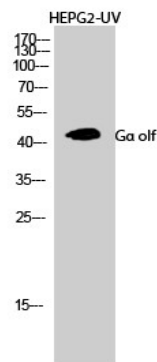
**Product Name: Gα olf Rabbit Polyclonal Antibody**  
**Catalog #: APRab11865**



Western blot analysis of lysates from LOVO cells, using GNAL Antibody. The lane on the right is blocked with the synthesized peptide.



Western Blot analysis of various cells using Gα olf Polyclonal Antibody diluted at 1: 1000



Western Blot analysis of HEPG2-UV cells using Gα olf Polyclonal Antibody diluted at 1: 1000

## Note

For research use only.