
Summary

Production Name	GUSBP1 Rabbit Polyclonal Antibody
Description	Rabbit Polyclonal Antibody
Host	Rabbit
Application	WB,ELISA
Reactivity	Human,Rat,Mouse

Performance

Conjugation	Unconjugated
Modification	Unmodified
Isotype	IgG
Clonality	Polyclonal
Form	Liquid
Storage	Store at 4°C short term. Aliquot and store at -20°C long term. Avoid freeze/thaw cycles.
Buffer	Liquid in PBS containing 50% glycerol, 0.5% BSA and 0.02% New type preservative N.
Purification	Affinity purification

Immunogen

Gene Name	GUSBP1
Alternative Names	GUSBP1; SMA3; Putative beta-glucuronidase-like protein SMA3
Gene ID	153561.0
SwissProt ID	Q15486.The antiserum was produced against synthesized peptide derived from human GUSBL1. AA range:51-100

Application

Dilution Ratio	WB 1:500 - 1:2000. ELISA: 1:40000.
Molecular Weight	18kD

Background

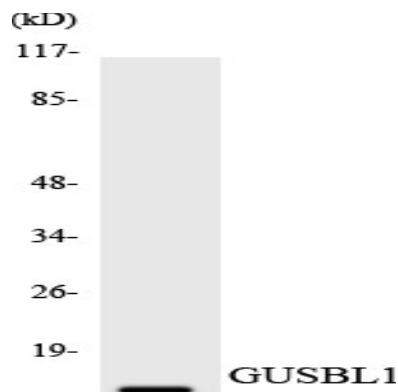
Product Name: GUSBP1 Rabbit Polyclonal Antibody
Catalog #: APRab11861



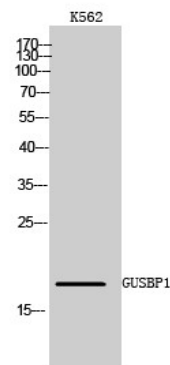
Binds GTP, GDP and GMP.skeletal system development,

Research Area

Image Data



Western blot analysis of the lysates from HT-29 cells using GUSBL1 antibody.



Western Blot analysis of K562 cells using GUSBP1 Polyclonal Antibody

Note

For research use only.