

Summary

Production Name	GSK3 α / β Rabbit Polyclonal Antibody
Description	Rabbit Polyclonal Antibody
Host	Rabbit
Application	IHC, WB,
Reactivity	Human, Mouse, Rat, Drosophila, Drosophila

Performance

Conjugation	Unconjugated
Modification	Unmodified
Isotype	IgG
Clonality	Polyclonal
Form	Liquid
Storage	Store at 4°C short term. Aliquot and store at -20°C long term. Avoid freeze/thaw cycles.
Buffer	Liquid in PBS containing 50% glycerol, 0.5% BSA and 0.02% New type preservative N.
Purification	Affinity purification

Immunogen

Gene Name	GSK3A/GSK3B
Alternative Names	GSK3A; Glycogen synthase kinase-3 alpha; GSK-3 alpha; Serine/threonine-protein kinase GSK3A; GSK3B; Glycogen synthase kinase-3 beta; GSK-3 beta; Serine/threonine-protein kinase GSK3B
Gene ID	2931.0
SwissProt ID	P49840/P49841. The antiserum was produced against synthesized peptide derived from human GSK3 alpha/beta. AA range: 246-295

Application

Dilution Ratio	WB 1:500 - 1:2000. IHC 1:100 - 1:300. ELISA: 1:20000..
Molecular Weight	51,46kD

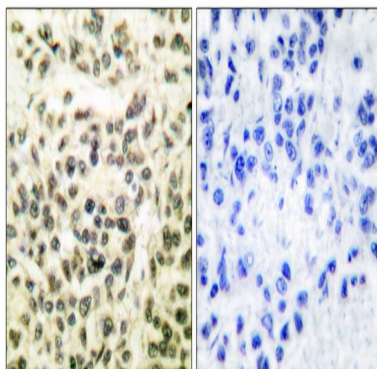
Background

glycogen synthase kinase 3 alpha(GSK3A) Homo sapiens This gene encodes a multifunctional Ser/Thr protein kinase that is implicated in the control of several regulatory proteins including glycogen synthase, and transcription factors, such as JUN. It also plays a role in the WNT and PI3K signaling pathways, as well as regulates the production of beta-amyloid peptides associated with Alzheimer's disease. [provided by RefSeq, Oct 2011],catalytic activity:ATP + [tau protein] = ADP + [tau protein] phosphate.,function:Implicated in the hormonal control of several regulatory proteins including glycogen synthase, MYB and the transcription factor JUN.,similarity:Belongs to the protein kinase superfamily.,similarity:Belongs to the protein kinase superfamily. CMGC Ser/Thr protein kinase family. GSK-3 subfamily.,similarity:Contains 1 protein kinase domain.,subunit:Monomer.,

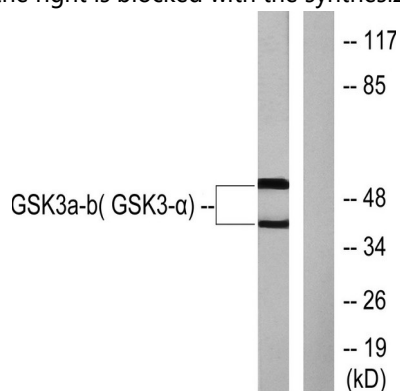
Research Area

Chemokine;

Image Data

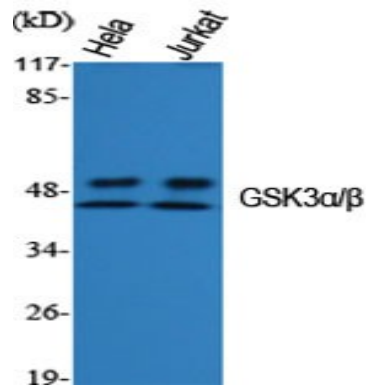


Immunohistochemistry analysis of paraffin-embedded human breast carcinoma tissue, using GSK3 alpha/beta Antibody. The picture on the right is blocked with the synthesized peptide.

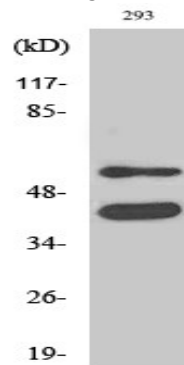


Western blot analysis of lysates from 293 cells, treated with TNF-a 20ng/ml 30', using GSK3 alpha/beta Antibody. The lane on the right is blocked with the synthesized peptide.

Product Name: GSK3 α/β Rabbit Polyclonal Antibody
Catalog #: APRab11823



Western Blot analysis of various cells using GSK3 α/β Polyclonal Antibody diluted at 1 : 1000



Western Blot analysis of 293 cells using GSK3 α/β Polyclonal Antibody diluted at 1 : 1000

Note

For research use only.