

Product Name: GSC Rabbit Polyclonal Antibody
Catalog #: APRab11809

Summary

Production Name	GSC Rabbit Polyclonal Antibody
Description	Rabbit Polyclonal Antibody
Host	Rabbit
Application	IHC,ELISA
Reactivity	Human,Mouse,Rat

Performance

Conjugation	Unconjugated
Modification	Unmodified
Isotype	IgG
Clonality	Polyclonal
Form	Liquid
Storage	Store at 4°C short term. Aliquot and store at -20°C long term. Avoid freeze/thaw cycles.
Buffer	Liquid in PBS containing 50% glycerol, 0.5% BSA and 0.02% New type preservative N.
Purification	Affinity purification

Immunogen

Gene Name	GSC
Alternative Names	Homeobox protein gooseoid
Gene ID	145258.0
SwissProt ID	P56915.Synthetic peptide from human protein at AA range: 207-256

Application

Dilution Ratio	IHC 1:50-200, ELISA 1:10000-20000.
Molecular Weight	

Background

gooseoid homeobox(GSC) Homo sapiens This gene encodes a member of the bicoid subfamily of the paired (PRD)

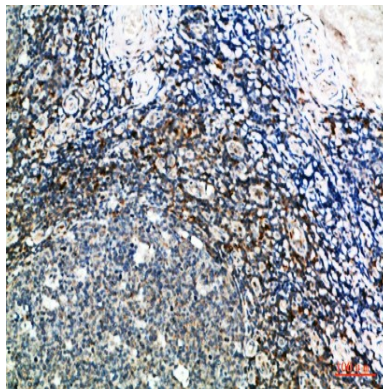
Product Name: GSC Rabbit Polyclonal Antibody
Catalog #: APRab11809



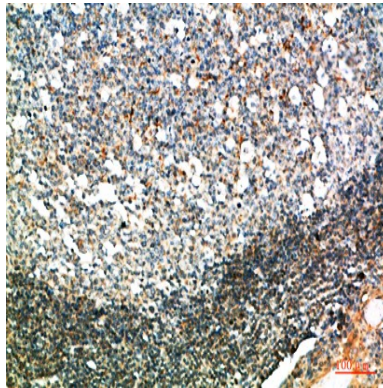
homeobox family of proteins. The encoded protein acts as a transcription factor and may be autoregulatory. A similar protein in mice plays a role in craniofacial and rib cage development during embryogenesis. [provided by RefSeq, Jul 2008],function:Regulates chordin (CHRD). May play a role in spatial programming within discrete embryonic fields or lineage compartments during organogenesis.,similarity:Belongs to the paired homeobox family. Bicoid subfamily.,similarity:Contains 1 homeobox DNA-binding domain.,

Research Area

Image Data



Immunohistochemical analysis of paraffin-embedded human-tonsil, antibody was diluted at 1:200



Immunohistochemical analysis of paraffin-embedded human-tonsil, antibody was diluted at 1:200

Note

For research use only.