
Summary

Production Name	GRTP1 Rabbit Polyclonal Antibody
Description	Rabbit Polyclonal Antibody
Host	Rabbit
Application	WB,ELISA
Reactivity	Human,Rat,Mouse

Performance

Conjugation	Unconjugated
Modification	Unmodified
Isotype	IgG
Clonality	Polyclonal
Form	Liquid
Storage	Store at 4°C short term. Aliquot and store at -20°C long term. Avoid freeze/thaw cycles.
Buffer	Liquid in PBS containing 50% glycerol, 0.5% BSA and 0.02% New type preservative N.
Purification	Affinity purification

Immunogen

Gene Name	GRTP1
Alternative Names	GRTP1; TBC1D6; Growth hormone-regulated TBC protein 1; TBC1 domain family member 6
Gene ID	79774.0
SwissProt ID	Q5TC63.The antiserum was produced against synthesized peptide derived from human GRTP1. AA range:71-120

Application

Dilution Ratio	WB 1:500 - 1:2000. ELISA: 1:40000..
Molecular Weight	35kD

Product Name: GRTP1 Rabbit Polyclonal Antibody
Catalog #: APRab11805

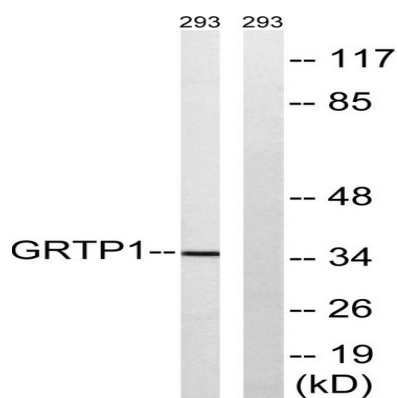


Background

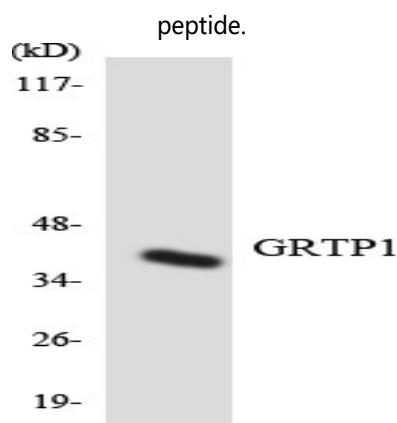
function: May act as a GTPase-activating protein for Rab family protein(s), similarity: Contains 1 Rab-GAP TBC domain., function: May act as a GTPase-activating protein for Rab family protein(s), similarity: Contains 1 Rab-GAP TBC domain.,

Research Area

Image Data

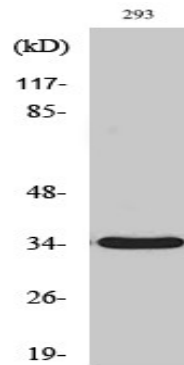


Western blot analysis of lysates from 293 cells, using GRTP1 Antibody. The lane on the right is blocked with the synthesized peptide.



Western blot analysis of the lysates from Jurkat cells using GRTP1 antibody.

Product Name: GRTP1 Rabbit Polyclonal Antibody
Catalog #: APRab11805



Western Blot analysis of various cells using GRTP1 Polyclonal Antibody

Note

For research use only.