

Summary

Production Name	GRK 6 Rabbit Polyclonal Antibody
Description	Rabbit Polyclonal Antibody
Host	Rabbit
Application	IF, WB, ELISA
Reactivity	Human, Mouse, Rat

Performance

Conjugation	Unconjugated
Modification	Unmodified
Isotype	IgG
Clonality	Polyclonal
Form	Liquid
Storage	Store at 4°C short term. Aliquot and store at -20°C long term. Avoid freeze/thaw cycles.
Buffer	Liquid in PBS containing 50% glycerol, 0.5% BSA and 0.02% New type preservative N.
Purification	Affinity purification

Immunogen

Gene Name	GRK6
Alternative Names	GRK6; GPRK6; G protein-coupled receptor kinase 6; G protein-coupled receptor kinase GRK6
Gene ID	2870.0
SwissProt ID	P43250. The antiserum was produced against synthesized peptide derived from human GRK6. AA range:10-59

Application

Dilution Ratio	WB 1:500 - 1:2000. IF 1:200 - 1:1000. ELISA: 1:10000. Not yet tested in other applications.
Molecular Weight	65kD

Background

This gene encodes a member of the guanine nucleotide-binding protein (G protein)-coupled receptor kinase subfamily of the Ser/Thr protein kinase family. The protein phosphorylates the activated forms of G protein-coupled receptors thus initiating their deactivation. Several transcript variants encoding different isoforms have been described for this gene.

[provided by RefSeq, Jul 2008],catalytic activity:ATP + [G-protein-coupled receptor] = ADP + [G-protein-coupled receptor]

phosphate.,function:Specifically phosphorylates the activated forms of G protein-coupled receptors.,PTM:It is uncertain

whether palmitoylation is on Cys-561 and/or Cys-562 and/or Cys-565.,similarity:Belongs to the protein kinase

superfamily.,similarity:Belongs to the protein kinase superfamily. AGC Ser/Thr protein kinase family. GPRK

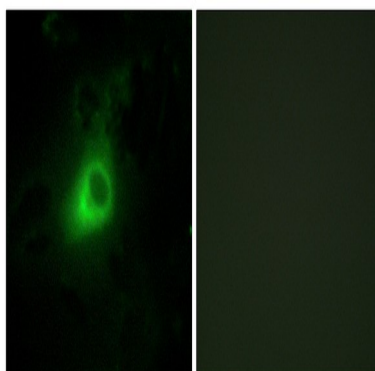
subfamily.,similarity:Contains 1 AGC-kinase C-terminal domain.,similarity:Contains 1 protein kinase

domain.,similarity:Contains 1 RGS domain.,tissue specificity:Widely expressed.,

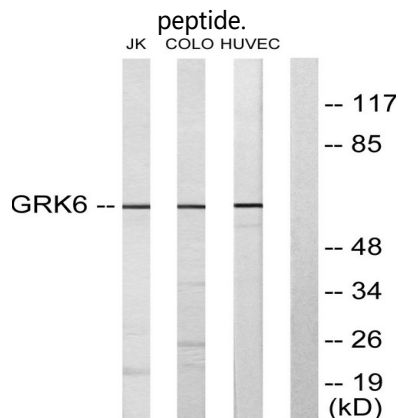
Research Area

Chemokine;Endocytosis;

Image Data



Immunofluorescence analysis of HeLa cells, using GRK6 Antibody. The picture on the right is blocked with the synthesized

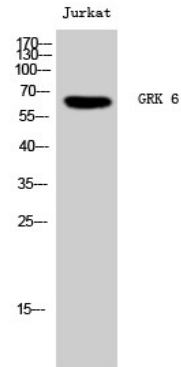


Western blot analysis of lysates from Jurkat, COLO205, and HUVEC cells, using GRK6 Antibody. The lane on the right is

Product Name: GRK 6 Rabbit Polyclonal Antibody
Catalog #: APRab11777



blocked with the synthesized peptide.



Western Blot analysis of Jurkat cells using GRK 6 Polyclonal Antibody

Note

For research use only.