

Summary

Production Name	Granzyme B Rabbit Polyclonal Antibody
Description	Rabbit Polyclonal Antibody
Host	Rabbit
Application	WB,IHC,
Reactivity	Human,Mouse,Rat

Performance

Conjugation	Unconjugated
Modification	Unmodified
Isotype	IgG
Clonality	Polyclonal
Form	Liquid
Storage	Store at 4°C short term. Aliquot and store at -20°C long term. Avoid freeze/thaw cycles.
Buffer	Liquid in PBS containing 50% glycerol, 0.5% BSA and 0.02% New type preservative N.
Purification	Affinity purification

Immunogen

Gene Name	GZMB CGL1 CSPB CTLA1 GRB Granzyme B (EC 3.4.21.79;C11;CTLA-1;Cathepsin G-like 1;CTSG1;Cytotoxic T-lymphocyte proteinase 2;Lymphocyte protease;Fragmentin-2;Granzyme-2;Human lymphocyte protein;HLP;SECT;T-cell serine protease 1-3E)
Alternative Names	
Gene ID	3002.0
SwissProt ID	P10144.Synthesized peptide derived from human Granzyme B Polyclonal AA range: 81-130

Application

Dilution Ratio	IHC-p: 100-300.WB 1:500-2000, ELISA 1:10000-20000.
Molecular Weight	38kD

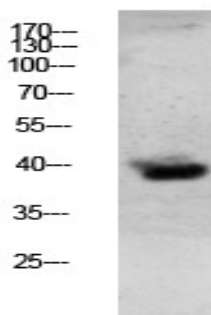
Background

This gene encodes a member of the granzyme subfamily of proteins, part of the peptidase S1 family of serine proteases. The encoded preproprotein is secreted by natural killer (NK) cells and cytotoxic T lymphocytes (CTLs) and proteolytically processed to generate the active protease, which induces target cell apoptosis. This protein also processes cytokines and degrades extracellular matrix proteins, and these roles are implicated in chronic inflammation and wound healing. Expression of this gene may be elevated in human patients with cardiac fibrosis. [provided by RefSeq, Sep 2016], catalytic activity: Preferential cleavage: -Asp-|-Xaa- >> -Asn-|-Xaa- > -Met-|-Xaa-, -Ser-|-Xaa-, function: This enzyme is necessary for target cell lysis in cell-mediated immune responses. It cleaves after Asp. Seems to be linked to an activation cascade of caspases (aspartate-specific cysteine proteases) responsible for apoptosis execution. Cleaves caspase-3, -7, -9 and 10 to give rise to active enzymes mediating apoptosis, induction: By staphylococcal enterotoxin A (SEA) in peripheral blood leukocytes, similarity: Belongs to the peptidase S1 family, similarity: Belongs to the peptidase S1 family. Granzyme subfamily, similarity: Contains 1 peptidase S1 domain, subcellular location: Cytoplasmic granules of cytolytic T-lymphocytes and natural killer cells,

Research Area

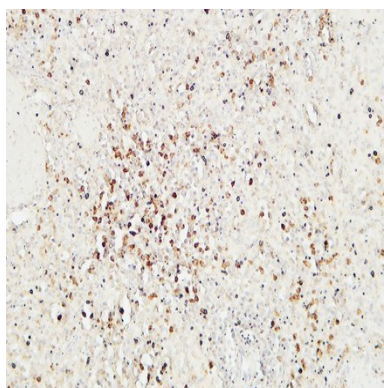
Natural killer cell mediated cytotoxicity; Type I diabetes mellitus; Autoimmune thyroid disease; Allograft rejection; Graft-versus-host disease;

Image Data

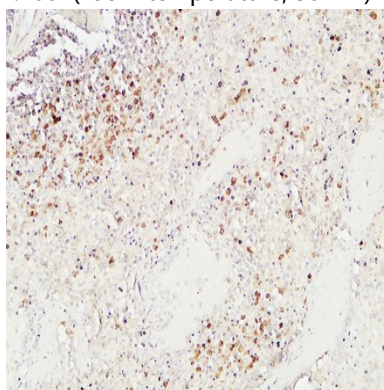


Western blot analysis of mouse-lung lysate, antibody was diluted at 1000. Secondary antibody was diluted at 1:20000

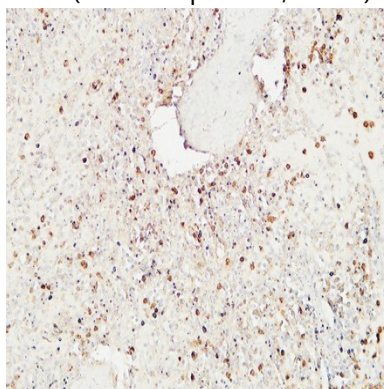
Product Name: Granzyme B Rabbit Polyclonal Antibody
Catalog #: APRab11740



Immunohistochemical analysis of paraffin-embedded Human spleen. 1, Antibody was diluted at 1:200 (4°,overnight) . 2, High-pressure and temperature EDTA, pH8.0 was used for antigen retrieval. 3,Secondary antibody was diluted at 1:200 (room temperature, 30min) .



Immunohistochemical analysis of paraffin-embedded Human spleen. 1, Antibody was diluted at 1:200 (4°,overnight) . 2, High-pressure and temperature EDTA, pH8.0 was used for antigen retrieval. 3,Secondary antibody was diluted at 1:200 (room temperature, 30min) .



Immunohistochemical analysis of paraffin-embedded Human spleen. 1, Antibody was diluted at 1:200 (4°,overnight) . 2, High-pressure and temperature EDTA, pH8.0 was used for antigen retrieval. 3,Secondary antibody was diluted at 1:200 (room temperature, 30min) .

Product Name: Granzyme B Rabbit Polyclonal Antibody
Catalog #: APRab11740



Note

For research use only.